

**DICOM CONFORMANCE STATEMENT  
FOR  
CANON NUCLEAR MEDICINE EQUIPMENT**

**GCA-9300R  
(Processing Workstation)**

**CANON MEDICAL SYSTEMS CORPORATION**

## **Trademarks**

This document may include trademarks or registered trademarks of other companies.  
GCA-9300R is a trademark of Canon Medical Systems Corporation.

### **IMPORTANT!**

- (1) No part of this document may be copied or reprinted, in whole or in part, without written permission.
- (2) The contents of this document are subject to change without prior notice and without our legal obligation.

# 1 CONFORMANCE STATEMENT OVERVIEW

The application supports image receives across the network from other systems for 2D and 3D viewing. The SOP Classes in Table 1-1 (Transfer) can be received and stored.

The application also supports the ability to query remote systems for a list of DICOM objects that may be retrieved. It also supports incoming queries from remote systems for a list of DICOM objects and the ability to retrieve them from the application. NM, CT and Secondary Capture images can be generated and sent to remote systems, printed by printers or imagers, and also handling of offline media is supported.

The application acts as a Verification SOP Class SCU and SCP.

**Table 1-1 Network Services**

SOP Classes	SOP Class UID	User of Service (SCU)	Provider of Service (SCP)
<b>Transfer</b>			
Verification	1.2.840.10008.1.1	Yes	Yes
CT Image Storage	1.2.840.10008.1.1.2	No	Yes
Nuclear Medicine Image Storage	1.2.840.10008.5.1.4.1.1.20	Yes	Yes
Secondary Capture Image Storage	1.2.840.10008.5.1.4.1.1.7	Yes	Yes
Multi-frame True Color Secondary Capture Image Storage	1.2.840.10008.5.1.4.1.1.7.4	Yes	Yes
<b>Query/Retrieve</b>			
Study Root Query/Retrieve Information Model – FIND	1.2.840.10008.5.1.4.1.2.2.1.	Yes	Yes
Study Root Query/Rertieve Information Model – MOVE	1.2.840.10008.5.1.4.1.2.2.2.	Yes	Yes
<b>Print Management</b>			
Basic Grayscale Print Management	1.2.840.10008.5.1.4.1.1.9	Yes	No
Basic Color Print Management	1.2.840.10008.5.1.4.1.1.18	Yes	No

**Table 1-2 Media Services**

Media Storage Application Profile	Write Files (FSC or FSU)	Read Files (FSR)
<b>Compact Disk – Recordable</b>		
CT/MR Studies on CD-R	Yes	Yes
General Purpose CD-R	Yes	Yes
<b>DVD</b>		
CT/MR Studies on DVD Media	Yes	Yes
General Purpose DVD Interchange with JPEG	Yes	Yes
General Purpose DVD Interchange with JPEG 2000	Yes	Yes

## 2 TABLE OF CONTENTS

<b>1</b>	<b>CONFORMANCE STATEMENT OVERVIEW .....</b>	<b>a</b>
<b>2</b>	<b>TABLE OF CONTENTS.....</b>	<b>b</b>
<b>3</b>	<b>INTRODUCTION.....</b>	<b>1</b>
3.1	Revision History .....	1
3.2	Audience .....	1
3.3	Remarks .....	1
3.4	Terms and Definitions.....	2
3.5	Basics of DICOM Communication.....	4
3.6	Abbreviations.....	5
3.7	References .....	5
<b>4</b>	<b>NETWORKING .....</b>	<b>6</b>
4.1	<b>Implementation Model.....</b>	<b>6</b>
4.1.1	Application Data Flow.....	6
4.1.2	Functional Definition of AE's .....	7
4.1.3	Sequencing of Real-World Activities .....	9
4.2	<b>AE Specifications .....</b>	<b>11</b>
4.2.1	ECHO-SCP.....	11
4.2.2	ECHO-SCU .....	13
4.2.3	FIND-SCU .....	15
4.2.4	FIND-SCP.....	18
4.2.5	MOVE-SCU .....	22
4.2.6	MOVE-SCP .....	26
4.2.7	STORAGE-SCU .....	29
4.2.8	STORAGE-SCP .....	32
4.2.9	PRINT-SCU.....	35
4.3	<b>Network Interfaces .....</b>	<b>46</b>
4.3.1	Physical Network Interface.....	46
4.3.2	Additional Protocols.....	46
4.4	<b>Configuration .....</b>	<b>46</b>
4.4.1	AE Title/Presentation Address Mapping .....	47
4.4.2	Parameters.....	47
<b>5</b>	<b>MEDIA INTERCHANGE.....</b>	<b>49</b>
5.1	<b>Implementation Model.....</b>	<b>49</b>
5.1.1	Application Data Flow.....	49
5.1.2	Functional Definitions of AE's.....	49
5.1.3	Sequencing of Real-World Activities .....	49
5.2	<b>AE Specifications .....</b>	<b>49</b>
5.2.1	MEDIA-FSR.....	49
5.2.2	MEDIA-FSC.....	50
5.3	<b>Augmented and Private Application Profiles .....</b>	<b>50</b>
5.3.1	Augmented Profiles .....	50
5.3.2	Private Profiles .....	51
5.4	<b>MEDIA Configuration .....</b>	<b>51</b>
<b>6</b>	<b>SUPPORT OF CHARACTER SETS.....</b>	<b>52</b>
<b>7</b>	<b>SECURITY .....</b>	<b>53</b>
7.1	<b>Network .....</b>	<b>53</b>
7.2	<b>Basic Application Level Confidentiality Profile (De-Identification).....</b>	<b>53</b>
<b>8</b>	<b>ANNEXES .....</b>	<b>57</b>
8.1	<b>IOD CONTENTS .....</b>	<b>57</b>
8.1.1	CT Image SOP Instances.....	57

8.1.2	Secondary Capture SOP Instances .....	58
8.1.3	NM Image SOP Instances.....	58
8.1.4	Modules.....	60
<b>8.2</b>	<b>Data Dictionary of Private Attributes .....</b>	<b>72</b>

\*

## 3 INTRODUCTION

### 3.1 Revision History

Table 3-1 Revision History

REV.	Date of Issue	Author	Description
	April 1, 2014	TMSC	First printing
A	January 4, 2018	Canon Medical Systems	Change of company name

### 3.2 Audience

This document is written for the people that need to understand how the GCA-9300R will integrate into their healthcare facility. This includes both those responsible for overall imaging network policy and architecture, as well as integrators who need to have a detailed understanding of the DICOM features of the product. This document contains some basic DICOM definitions so that any reader may understand how this product implements DICOM features. However, integrators are expected to fully understand all the DICOM terminology, how the tables in this document relate to the product's functionality, and how that functionality integrates with other devices that support compatible DICOM features. Also note that this document is formatted according to the DICOM 3.1 Specification, Part 2: Conformance.

### 3.3 Remarks

The scope of this DICOM Conformance Statement is to facilitate integration between the GCA-9300R and other DICOM products. The Conformance Statement should be read and understood in conjunction with the DICOM Standard. DICOM by itself does not guarantee interoperability. The Conformance Statement does, however, facilitate a first-level comparison for interoperability between different applications supporting compatible DICOM functionality.

This Conformance Statement is not supposed to replace validation with other DICOM equipment to ensure proper exchange of intended information. In fact, the user should be aware of the following important issues:

- The comparison of different Conformance Statements is just the first step towards assessing interconnectivity and interoperability between the product and other DICOM conformant equipment.
- Test procedures should be defined and executed to validate the required level of interoperability with specific compatible DICOM equipment, as established by the healthcare facility.

### 3.4 Terms and Definitions

Informal definitions are provided for the following terms used in this Conformance Statement. The DICOM Standard is the authoritative source for formal definitions of these terms.

**Abstract Syntax** – the information agreed to be exchanged between applications, generally equivalent to a Service/Object Pair (SOP) Class. Examples : Verification SOP Class, Computed Tomography Image Storage SOP Class.

**Application Entity (AE)** – an end point of a DICOM information exchange, including the DICOM network or media interface software; i.e., the software that sends or receives DICOM information objects or messages. A single device may have multiple Application Entities.

**Application Entity Title** – the externally known name of an Application Entity, used to identify a DICOM application to other DICOM applications on the network.

**Application Context** – the specification of the type of communication used between Application Entities. Example: DICOM network protocol.

**Association** – a network communication channel set up between Application Entities.

**Digital Imaging and Communications in Medicine (DICOM)** - DICOM is a global Information-Technology standard used in all hospitals worldwide.

**Information Object Definition (IOD)** – the specified set of Attributes that comprise a type of data object; does not represent a specific instance of the data object, but rather a class of similar data objects that have the same properties. The Attributes may be specified as Mandatory (Type 1), Required but possibly unknown (Type 2), or Optional (Type 3), and there may be conditions associated with the use of an Attribute (Types 1C and 2C). Examples: CT Image IOD, Print Job IOD.

**Integrating the Healthcare Enterprise (IHE)** - IHE is an initiative by healthcare professionals and industry to improve the way computer systems in healthcare share information. IHE promotes the coordinated use of established standards such as DICOM and HL7 to address specific clinical need in support of optimal patient care.

**Joint Photographic Experts Group (JPEG)** – a set of standardized image compression techniques, available for use by DICOM applications.

**Media Application Profile** – the specification of DICOM information objects and encoding exchanged on removable media (e.g., CDs).

**Module** – a set of Attributes within an Information Object Definition that are logically related to each other. Example: Patient Module includes Patient Name, Patient ID, Patient Birth Date, and Patient Sex.

**Negotiation** – first phase of Association establishment that allows Application Entities to agree on the types of data to be exchanged and how that data will be encoded.

**Presentation Context** – the set of DICOM network services used over an Association, as negotiated between Application Entities; includes Abstract Syntaxes and Transfer Syntaxes.

**Protocol Data Unit (PDU)** – a packet (piece) of a DICOM message sent across the network. Devices must specify the maximum size packet they can receive for DICOM messages.

**Security Profile** – a set of mechanisms, such as encryption, user authentication, or digital signatures, used by an Application Entity to ensure confidentiality, integrity, and/or availability of exchanged DICOM data.

**Service Class Provider (SCP)** – role of an Application Entity that provides a DICOM network service; typically, a server that performs operations requested by another Application Entity (Service Class User). Examples: Picture Archiving and Communication System (image storage SCP, and image query/retrieve SCP)

**Service Class User (SCU)** – role of an Application Entity that uses a DICOM network service; typically, a client. Examples: imaging modality (image storage SCU, and modality worklist SCU), imaging workstation (image query/retrieve SCU).

**Service/Object Pair (SOP) Class** – the specification of the network or media transfer (service) of a particular type of data (object); the fundamental unit of DICOM interoperability specification. Examples: Computed Tomography Image Storage Service, Basic Grayscale Print Management.

**Tag** – a 32-bit identifier for a data element, represented as a pair of four digit hexadecimal numbers, the “group” and the “element”. If the “group” number is odd, the tag is for a private (manufacturer-specific) data element. Examples: 0010,0020 [Patient ID], (07FE,0010) [Pixel Data].

**Transfer Syntax** – the encoding used for exchange of DICOM information objects and messages. Examples: JPEG compressed (images), little endian explicit value representation.

**Unique Identifier (UID)** – a globally unique “dotted decimal” string that identifies a specific object or a class of objects; an ISO-8824 Object Identifier. Examples: Study Instance UID, SOP Class UID, SOP Instance UID.

**Value Representation (VR)** – the format type of an individual DICOM data element, such as text, an integer, a person’s name, or a code. DICOM information objects can be transmitted with either explicit identification of the type of each data element (Explicit VR), or without explicit identification (Implicit VR); with Implicit VR, the receiving application must use a DICOM data dictionary to look up the format of each data element.



### 3.5 Basics of DICOM Communication

This section describes terminology used in this Conformance Statement for the non-specialist. The key terms used in the Conformance Statement are highlighted in italics below. This section is not a substitute for training about DICOM, and it makes many simplifications about the meanings of DICOM terms.

Two Application Entities (devices) that want to communicate with each other over a network using DICOM protocol must first agree on several things during an initial network “handshake”. One of the two devices must initiate an Association (a connection to the other device), and ask if specific services, information, and encoding can be supported by the other device (Negotiation).

DICOM specifies a number of network services and types of information objects, each of which is called an Abstract Syntax for the Negotiation. DICOM also specifies a variety of methods for encoding data, denoted Transfer Syntaxes. The Negotiation allows the initiating Application Entity to propose combinations of Abstract Syntax and Transfer Syntax to be used on the Association; these combinations are called Presentation Contexts. The receiving Application Entity accepts the Presentation Contexts it supports.

For each Presentation Context, the Association Negotiation also allows the devices to agree on Roles – which one is the Service Class User (SCU - client) and which is the Service Class Provider (SCP - server). Normally the device initiating the connection is the SCU, i.e., the client system calls the server, but not always.

The Association Negotiation finally enables exchange of maximum network packet (PDU) size, security information, and network service options (called Extended Negotiation information).

The Application Entities, having negotiated the Association parameters, may now commence exchanging data. Common data exchanges include queries for worklists and lists of stored images, transfer of image objects and analyses (structured reports), and sending images to film printers. Each exchangeable unit of data is formatted by the sender in accordance with the appropriate Information Object Definition, and sent using the negotiated Transfer Syntax. There is a Default Transfer Syntax that all systems must accept, but it may not be the most efficient for some use cases. Each transfer is explicitly acknowledged by the receiver with a Response Status indicating success, failure, or that query or retrieve operations are still in process.

Two Application Entities may also communicate with each other by exchanging media (such as a CD-R). Since there is no Association Negotiation possible, they both use a Media Application Profile that specifies “pre-negotiated” exchange media format, Abstract Syntax, and Transfer Syntax.

### 3.6 Abbreviations

AE	Application Entity
AET	Application Entity Title
CD-R	Compact Disk Recordable
DICOM	Digital Imaging and Communications in Medicine
DIMSE	DICOM Message Service Element
DVD	Digital Versatile Disk
FSC	File-Set Creator
FSR	File-Set Reader
FSU	File-Set Updater
HIS	Hospital Information System
HL7	Health Level 7 Standard
IHE	Integrating the Healthcare Enterprise
IOD	Information Object Definition
JPEG	Joint Photographic Experts Group
NM	Nuclear Medicine
PDU	Protocol Data Unit
SC	Secondary Capture
SCP	Service Class Provider
SCU	Service Class User
SOP	Service-Object Pair
TCP/IP	Transmission Control Protocol/Internet Protocol
VR	Value Representation

### 3.7 References

NEMA PS3	DICOM Standard, available free at <a href="http://medical.nema.org/">http://medical.nema.org/</a> PS 3.1-2011
IHE	IHE, further information available at <a href="http://www.ihe.net/">http://www.ihe.net/</a>

## 4 NETWORKING

### 4.1 Implementation Model

#### 4.1.1 Application Data Flow

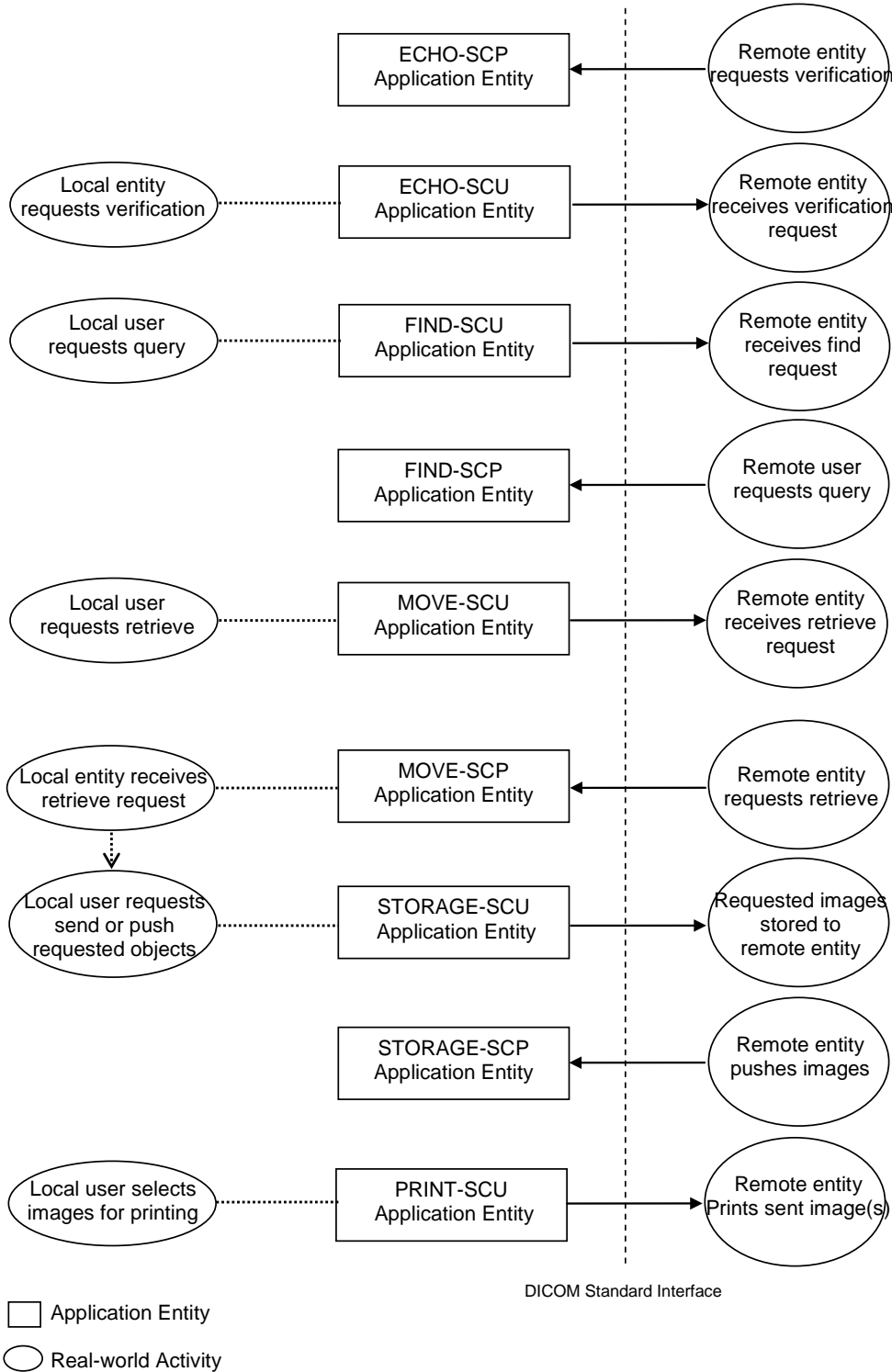


Figure 4.1 Implementation Model

The implementation consists of a set of applications which provide a user interface, internal database and network listeners that spawn additional threads or processes as necessary to handle incoming connections.

Conceptually the network services may be modeled as the following separate AEs, though in fact some AEs share (configurable) AE Titles:

- ECHO-SCP, which responds to verification requests
- ECHO-SCU, which sends verification requests
- FIND-SCU, which queries remote entities for lists of studies, series and instances
- FIND-SCP, which processes queries from remote entities for lists of studies, series and instances
- MOVE-SCU, which retrieves studies, series and instances from remote entities
- MOVE-SCP, which processes retrieve requests from remote entities for studies, series and instances
- STORAGE-SCU, which stores images and other composite instances to remote entities
- STORAGE-SCP, which receives images and other composite instances from remote entities
- PRINT-SCU, which sends images and print requests

## 4.1.2 Functional Definition of AE's

### 4.1.2.1 ECHO-SCP

ECHO-SCP waits in the background for connections, will accept associations with Presentation Contexts for SOP Class of the Verification Service Class, and will respond successfully to echo requests.

### 4.1.2.2 ECHO-SCU

ECHO-SCU is activated through the user interface when a user requests an echo to a remote AE. An echo is performed to that remote AE, verifying basic DICOM connectivity and displaying results.

### 4.1.2.3 FIND-SCU

FIND-SCU is activated through the user interface when a user selects a remote AE to query (from a pre-configured list), then initiates a query. Queries are performed at the study level. A user can further expand each result in the query, which then initiates a series level query.

### 4.1.2.4 FIND-SCP

FIND-SCP continuously runs in the background, waiting for connections, and will accept associations from known IP addresses with Presentation Contexts for Study Root Query/Retrieve Model Service Class. It will query the permanent database based on the tags specified in the query, and send the appropriate responses to the requesting entity. A limit of 500 matching responses is currently imposed on the service. A configuration option for receiving from all IP addresses is available, by default only configured incoming connections are accepted.

### 4.1.2.5 MOVE-SCU

MOVE-SCU is activated through the user interface when a user selects a study or series for retrieval. A connection to the remote AE is established to initiate and monitor the retrieval while the STORAGE-SCP AE receives the retrieved instances.

### 4.1.2.6 MOVE-SCP

MOVE-SCP continuously runs in the background, waiting for connections, and will accept associations with Presentation Contexts for Study Root Query/Retrieve Model Service Class. It will query the local database for instances matching the tags specified, and send the instances to the requested remote entity via the STORAGE-SCU.

### 4.1.2.7 STORAGE-SCU

STORAGE-SCU is activated through the user interface when a user selects instances from the permanent database, or the currently displayed instance, and requests that they be sent to a remote AE (selected from a pre-configured list).

#### 4.1.2.8 **STORAGE-SCP**

STORAGE-SCP continuously runs in the background, waiting for connections and will accept associations with Presentation Contexts for SOP Classes of the Storage Service Class and the Verification Service Class. It will store the received instances to the local database, complete preprocessing, and store the data to the local disk, after which they are listed and viewed through the user interface. A configuration option for receiving only from known IP addresses is available, by default all incoming connections are accepted. Any tags of type 1 (including all UIDs) which are missing, empty, or longer than the defined Standard value will be rejected.

#### 4.1.2.9 **PRINT-SCU**

PRINT-SCU is activated through the user interface when a user selects the currently displayed instance, and requests that it be printed by a remote AE (selected from a pre-configured list).

### 4.1.3 Sequencing of Real-World Activities

#### 4.1.3.1 Data Receipt

The system receives the data from Nuclear Medicine system or other remote systems. The data is received and viewed in the system, then processed, printed, written on offline media, or transferred to the other remote node using the system functions as well as the application programs installed in the system.

#### 4.1.3.2 Data Creation

The system creates the processed data from the received data using application programs installed in the system. Also the system creates secondary capture image data after processing of the data by application programs.

#### 4.1.3.3 DICOM Validation

##### 4.1.3.3.1 Invalid Dicom Values

Within the system there is validation for DICOM tags. Any tags of type 1 (including all UIDs) which are missing, empty, or longer than the defined Standard value will be rejected at the time of SCP receive. These tags have been identified as possible patient hazards if incorrectly populated, therefore they will not be allowed into the system. Users should reconcile the non-conformant data if it is to be processed by the system.

##### 4.1.3.3.2 Demographic Updates

STORAGE-SCP receives instances which may have changed demographic data. The new instances received replace the previously received specific instances. Demographic information in the system is updated to match the latest received instances and necessary volumes are regenerated.

New values for the following DICOM attributes can trigger a demographic update:

#### **PATIENT**

- (0010,0010) Patient's Name
- (0010,0020) Patient ID
- (0010,0030) Patient's Birth Date
- (0010,0032) Patient's Birth Time
- (0010,0040) Patient's Sex
- (0010,1000) Other Patient IDs
- (0010,1001) Other Patient Names
- (0010,1010) Patient's Age
- (0010,1020) Patient's Size
- (0010,1030) Patient's Weight
- (0010,2160) Ethnic Group
- (0010,2180) Occupation
- (0010,21B0) Additional Patient History
- (0010,4000) Patient Comments

#### **STUDY**

- (0008,0020) Study Date
- (0008,0030) Study Time
- (0008,0050) Accession Number
- (0008,0090) Referring Physician's Name
- (0008,1060) Name of Physician(s) Reading Study
- (0008,1080) Admitting Diagnoses Description
- (0008,1030) Study Description
- (0020,0010) Study ID
- (0020,1070) Other Study Numbers (RET)

#### **SERIES**

- (0008,0021) Series Date
- (0008,0031) Series Time
- (0008,0060) Modality
- (0008,0070) Manufacturer
- (0008,0080) Institution Name
- (0008,103E) Series Description
- (0008,1090) Manufacturer's Model Name
- (0018,0015) Body Part Examined

- (0018,0022) Scan Options
- (0018,1030) Protocol Name
- (0020,0011) Series Number

#### 4.1.3.3.3 **Duplicate Unique IDs**

Data with duplicate Unique IDs are in violation of the DICOM standard. However this kind of data is sometimes created in a healthcare enterprise as a workaround for certain workflows. The system has different levels of support depending on which UIDs are duplicated.

- Data with same (duplicate) StudyInstanceUID but with unique Series and/or InstanceUIDs is received and stored in the system.
- Data with same (duplicate) SeriesInstanceUID but in different Studies is received by the system but is not stored in the database. They need to be administratively cleaned out.
- Data with same (duplicate) SOPInstanceUID but in different Series is received and stored in the system.

## 4.2 AE Specifications

### 4.2.1 ECHO-SCP

#### 4.2.1.1 SOP Classes

ECHO-SCP provides Standard Conformance to the following SOP Class(es):

**Table 4-1 SOP Classes Supported by ECHO-SCP**

SOP Class Name	SOP Class UID	SCU	SCP
Verification SOP Class	1.2.840.10008.1.1	No	Yes

#### 4.2.1.2 Association Policies

##### 4.2.1.2.1 General

ECHO-SCP accepts but never initiates associations.

**Table 4-2 Maximum PDU size received as a SCP for ECHO-SCP**

Maximum PDU size received	Unlimited
---------------------------	-----------

##### 4.2.1.2.2 Number of Associations

**Table 4-3 Number of Associations as a SCP for ECHO-SCP**

Number of Associations	Unlimited
------------------------	-----------

##### 4.2.1.2.3 Asynchronous Nature

ECHO-SCP will only allow a single outstanding operation on an Association. Therefore, ECHO-SCP will not perform asynchronous operations window negotiation.

##### 4.2.1.2.4 Implementation Identifying Information

**Table 4-4 DICOM Implementation Class and Version for ECHO-SCP**

Implementation Class UID	1.3.6.1.4.1.25403.1.1.1
Implementation Version Name	Dicom 0.1

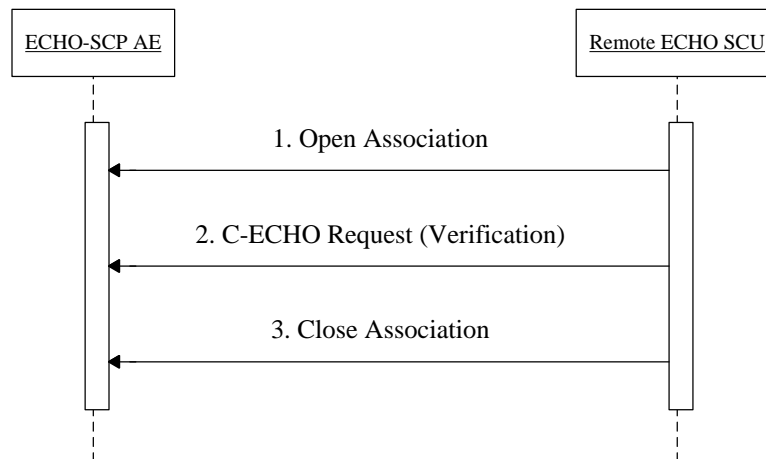
#### 4.2.1.3 Association Acceptance Policy

##### 4.2.1.3.1 Activity – Handle Verification Request

###### 4.2.1.3.1.1 Description and Sequencing of Activities

When ECHO-SCP accepts an association, it will respond to echo requests. If the Called AE Title does not match the pre-configured AE Title of the application, the association will be rejected.





**Figure 4.2 Sequencing of Activity – Handling Verification Request**

#### 4.2.1.3.1.2 Accepted Presentation Contexts

**Table 4-5 Accepted Presentation Contexts for ECHO-SCP**

Presentation Context Table					
Abstract Syntax		Transfer Syntax		Role	Extended Negotiation
Name	UID	Name	UID		
Verification	1.2.840.10008.1.1	Implicit VR Little Endian	1.2.840.10008.1.2	SCP	None
		Explicit VR Little Endian	1.2.840.10008.1.2.1	SCP	None

#### 4.2.1.3.1.3 Extended Negotiation

No extended negotiation is performed.

#### 4.2.1.3.1.4 SOP Specific Conformance

##### 4.2.1.3.1.4.1 SOP Specific Conformance Verification SOP Class

ECHO-SCP provides standard conformance to the Verification Service Class.

##### 4.2.1.3.1.4.2 Presentation Context Acceptance Criterion

ECHO-SCP will only accept a Presentation Context compatible with the one listed in DICOM PS3.2 Table D.4.2-5.

##### 4.2.1.3.1.4.3 Transfer Syntax Selection Policies

ECHO-SCP will select the first Transfer Syntax proposed by the client that is supported by the SCP, per Presentation Context.

ECHO-SCP will accept duplicate Presentation Contexts; that is, if it is offered multiple Presentation Contexts, each of which offers acceptable Transfer Syntaxes, it will accept all Presentation Contexts, applying the same method for selecting a Transfer Syntax for each.

##### 4.2.1.3.1.4.4 Response Status

ECHO-SCP will behave as described in the Table below when generating the C-STORE response command message.

**Table 4-6 Response Status for ECHO-SCP and Receive Storage Request**

Service Status	Further Meaning	Status Codes	Reason
Refused	Out of Resources	A7xx	Association limit reached, local disk space low
Error	Data Set does not match SOP class	A9xx	Never sent – data set is not checked prior to storage
	Cannot understand	Cxxx	Internal processing error
Warning	Coercion of Data Elements	B000	Never sent – no coercion is ever performed
	Data Set does not match SOP class	B007	Never sent – data set is not checked prior to storage
	Elements Discarded	B006	Never sent – all elements are always stored
Success		0000	

## 4.2.2 ECHO-SCU

### 4.2.2.1 SOP Classes

ECHO- SCU provides Standard Conformance to the following SOP Class(es):

**Table 4-7 SOP Classes Supported by ECHO-SCU**

SOP Class Name	SOP Class UID	SCU	SCP
Verification SOP Class	1.2.840.10008.1.1	Yes	No

### 4.2.2.2 Association Policies

#### 4.2.2.2.1 General

ECHO-SCU initiates associations through a user interface.

**Table 4-8 Maximum PDU size received as a SCP for ECHO-SCU**

Maximum PDU size received	Unlimited, default is 16384
---------------------------	-----------------------------

#### 4.2.2.2.2 Number of Associations

**Table 4-9 Number of Associations as a SCP for ECHO-SCU**

Number of Associations	1
------------------------	---

#### 4.2.2.2.3 Asynchronous Nature

ECHO-SCU will only allow a single outstanding operation on an Association. Therefore, ECHO-SCU will not perform asynchronous operations window negotiation.

#### 4.2.2.2.4 Implementation Identifying Information

**Table 4-10 DICOM Implementation Class and Version for ECHO-SCU**

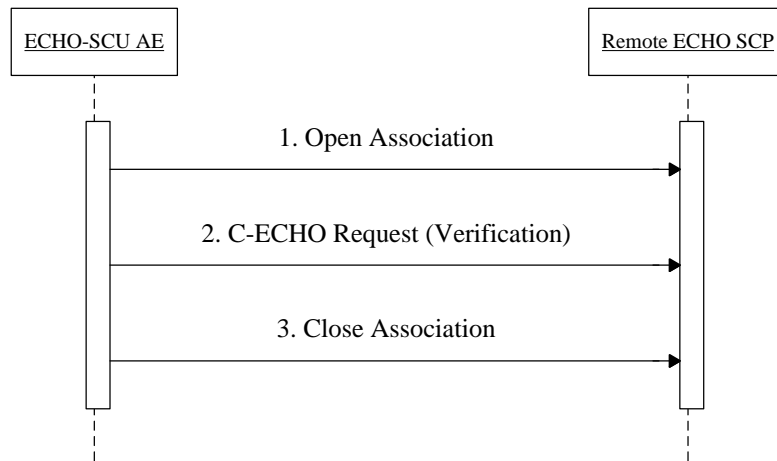
Implementation Class UID	1.3.6.1.4.1.25403.1.1.1
Implementation Version Name	Dicom 0.1

### 4.2.2.3 Association Initiation Policy

#### 4.2.2.3.1 Activity – Sending Verification Request

##### 4.2.2.3.1.1 Description and Sequencing of Activities

ECHO-SCU attempts to initiate a new association when the user requests an Echo from the user interface to a single remote AE. A single attempt will be made to verify the remote AE. If the verification fails, for whatever reason, no retry will be performed. The results will be displayed.



**Figure 4.3 Sequencing of Activity – Sending Verification Request**

#### 4.2.2.3.1.2 Proposed Presentation Contexts

**Table 4-11 Accepted Presentation Contexts for ECHO-SCU**

Presentation Context Table					
Abstract Syntax		Transfer Syntax		Role	Extended Negotiation
Name	UID	Name	UID		
Verification	1.2.840.10008.1.1	Implicit VR Little Endian	1.2.840.10008.1.2	SCP	None
		Explicit VR Little Endian	1.2.840.10008.1.2.1		

#### 4.2.2.3.1.3 Extended Negotiation

No extended negotiation is performed.

#### 4.2.2.3.1.4 SOP Specific Conformance

##### 4.2.2.3.1.4.1 SOP Specific Conformance to Verification SOP Classes

ECHO-SCU provides standard conformance to the Verification Service Class.

##### 4.2.2.3.1.4.2 Presentation Context Acceptance Criterion

ECHO-SCU does not accept associations.

##### 4.2.2.3.1.4.3 Transfer Syntax Selection Policies

ECHO-SCU prefers Explicit VR Little Endian Transfer Syntax, which is always first in the proposed Presentation Context.

#### 4.2.2.3.1.4.4 Response Status

ECHO-SCP will behave as described in the Table below when generating the C-STORE response command message.

**Table 4-12 Response Status for ECHO-SCU and Request Storage**

Service Status	Further Meaning	Status Codes	Reason
Refused	Out of Resources	A7xx	Job set to Failed state
Error	Data Set does not match SOP class	A9xx	Job set to Failed state
	Cannot understand	Cxxx	Job set to Failed state
Warning	Coercion of Data Elements	B000	Job set to Complete state
	Data Set does not match SOP class	B007	Job set to Failed state
	Elements Discarded	B006	Job set to Complete state
Success		0000	Job set to Complete state

### 4.2.3 FIND-SCU

#### 4.2.3.1 SOP Classes

FIND-SCU provides Standard Conformance to the following SOP Class(es):

**Table 4-13 SOP Classes Supported by FIND-SCU**

SOP Class Name	SOP Class UID	SCU	SCP
Study Root Query/Retrieve Information Model – FIND	1.2.840.10008.5.1.4.1.2.2.1	Yes	No

#### 4.2.3.2 Association Policies

##### 4.2.3.2.1 General

The DICOM standard application context name for DICOM 3.0 is always proposed:

**Table 4-14 DICOM Application Context for FIND-SCU**

Application Context Name	1.2.840.10008.3.1.1.1
--------------------------	-----------------------

**Table 4-15 Maximum PDU Size Sent for FIND-SCU**

Maximum PDU size sent	Unlimited, default is 65536
-----------------------	-----------------------------

##### 4.2.3.2.2 Number of Associations

**Table 4-16 Number of Associations for FIND-SCU**

Maximum number of simultaneous associations	1
---	---

##### 4.2.3.2.3 Asynchronous Nature

FIND-SCU will only allow a single outstanding operation on an Association. Therefore, FIND-SCU will not perform asynchronous operations window negotiation.

4.2.3.2.4 **Implementation Identifying Information**

**Table 4-17 DICOM Implementation Class and Version for FIND-SCU**

Implementation Class UID	1.3.6.1.4.1.25403.1.1.1
Implementation Version Name	Dicom 0.1

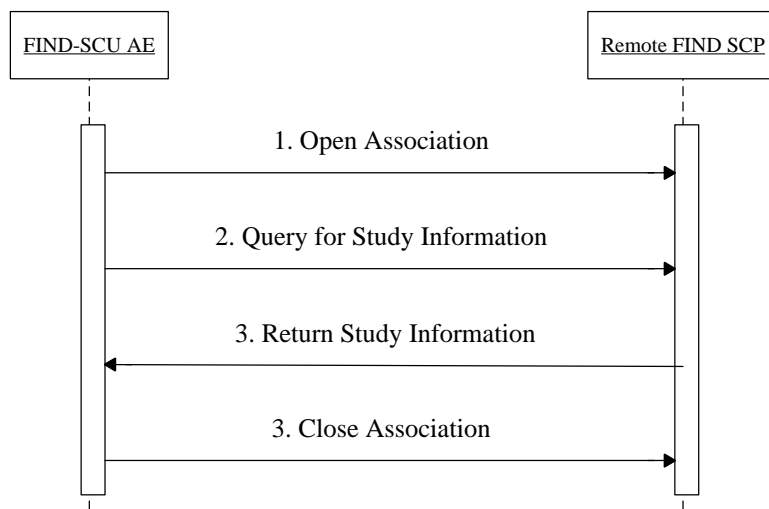
4.2.3.3 **Association Initiation Policy**

FIND-SCU attempts to initiate a new association when the user performs a find action from the user interface.

4.2.3.3.1 **Activity – Query Remote AE**

4.2.3.3.1.1 **Description and Sequencing of Activities**

A single attempt will be made to query the remote AE. If the query fails, for whatever reason, no retry will be performed and the user is visually notified of the failure.



**Figure 4.4 Sequencing of Activity – Query Remote AE**

4.2.3.3.1.2 **Proposed Presentation Contexts**

**Table 4-18 Proposed Presentation Contexts for FIND-SCU and Query Remote AE**

Presentation Context Table					
Abstract Syntax		Transfer Syntax		Role	Extended Negotiation
Name	UID	Name	UID	1	
See Table 4-13 SOP Classes Supported by FIND-SCU	See Table 4-13	Implicit VR Little Endian	1.2.840.10008.1.2	SCU	None

FIND-SCU will propose a single Presentation Context, specified in the above table.

4.2.3.3.1.3 **Extended Negotiation**

No extended negotiation is performed. In particular, relational queries are not supported.

#### 4.2.3.3.1.4 SOP Specific Conformance

##### 4.2.3.3.1.4.1 SOP Specific Conformance to C-FIND SOP Classes

FIND-SCU provides standard conformance to the supported C-FIND SOP Classes. Only a single information model, Study Root, is supported. Queries are initiated at the STUDY and SERIES levels, according to the request generated by the user interface. CANCEL requests are issued when the total number of matches exceeds the configurable limit, to avoid overflow of data, where the default limit is 100 matches. Unexpected attributes returned in a C-FIND response (those not requested) are ignored. Requested return attributes not returned by the SCP will not cause a failure and will be interpreted as empty values, this will be logged for further information. Non-matching responses returned by the SCP due to unsupported (hopefully optional) matching keys are not filtered locally by the FIND-SCU and thus will still be presented in the worklist. Duplicate responses will replace existing entries in the display.

**Table 4-19 Study Root Request Identifier for FIND-SCU**

Name	Tag	Types of Matching
<b>STUDY Level</b>		
Study Date	(0008,0020)	*,U,R
Study Time	(0008,0030)	*,U,R
Accession Number	(0008,0050)	S,*,U
Modalities In Study	(0008,0061)	S,U
Referring Physician's Name	(0008,0090)	U
Study Description	(0008,1030)	U
Patient's Name	(0010,0010)	S,*,U
Patient's ID	(0010,0020)	S,*,U
Study Instance UID	(0020,000D)	UNIQUE
Study ID	(0020,0010)	U
Number of Study Related Instances	(0020,1208)	U
<b>SERIES Level</b>		
Series Date	(0008,0021)	U
Series Time	(0008,0031)	U
Modality	(0008,0060)	U
Series Description	(0008,103E)	U
Protocol	(0018,1030)	U
Series Instance UID	(0020,000E)	UNIQUE
Series Number	(0020,0011)	U
Number of Series Related Instances	(0020,1209)	U

Types of Matching:

- S Indicates the identifier attribute uses Single Value Matching
- R Indicates Range Matching
- \* Indicates wildcard matching
- U Indicates Universal Matching
- UNIQUE Indicates that this is the Unique Key for that query level, in which case Universal Matching or Single Value Matching is used depending on the query level.

##### 4.2.3.3.1.4.2 Presentation Context Acceptance Criterion

FIND-SCU does not accept associations.

##### 4.2.3.3.1.4.3 Transfer Syntax Selection Policies

FIND-SCU uses only Implicit Little Endian Transfer Syntax.

#### 4.2.3.3.1.4.4 Response Status

FIND-SCU will behave as described in DICOM PS 3.2 Table D.4.2-24 in response to the status returned in the C-FIND response command message(s).

**Table 4-20 Response Status for FIND-SCU and Query Remote AE Request**

Service Status	Further Meaning	Status Codes	Behavior
Refused	Out of Resources	A700	Current query is terminated; remaining queries continue
Error	Identifier does not match SOP Class	A900	Current query is terminated; remaining queries continue
	Unable to process	Cxxx	Current query is terminated; remaining queries continue
Cancel	Matching terminated due to Cancel request	FE00	Current query is terminated; remaining queries continue
Success	Matching is complete - No final Identifier is supplied	0000	Query is successful
Pending	Matches are continuing - Current Match is supplied and any Optional Keys were supported in the same manner as Required Keys	FF00	Identifier used to populate worklist
	Matches are continuing - Warning that one or more Optional Keys were not supported for existence and/or matching for this Identifier	FF01	Returned values not overridden

#### 4.2.3.4 Association Acceptance Policy

FIND-SCU does not accept associations.

#### 4.2.4 FIND-SCP

##### 4.2.4.1 SOP Classes

FIND-SCP provides Standard Conformance to the following SOP Class(es):

**Table 4-21 SOP Classes Supported by FIND-SCP**

SOP Class Name	SOP Class UID	SCU	SCP
Study Root Query/Retrieve Information Model – FIND	1.2.840.10008.5.1.4.1.2.2.1	No	Yes

#### 4.2.4.2 Association Policies

##### 4.2.4.2.1 General

FIND-SCP initiates but never accepts associations.

**Table 4-22 Maximum PDU Size Received for FIND-SCP**

Maximum PDU size received	Unlimited
---------------------------	-----------

##### 4.2.4.2.2 Number of Associations

**Table 4-23 Number of Associations for FIND-SCP**

Maximum number of simultaneous associations	Unlimited
---	-----------

##### 4.2.4.2.3 Asynchronous Nature

FIND-SCP will only allow a single outstanding operation on an Association. Therefore, FIND-SCP will not perform asynchronous operations window negotiation.

##### 4.2.4.2.4 Implementation Identifying Information

**Table 4-24 DICOM Implementation Class and Version for FIND-SCP**

Implementation Class UID	1.3.6.1.4.1.25403.1.1.1
Implementation Version Name	Dicom 0.1

##### 4.2.4.3 Association Negotiation Policy

FIND-SCP does not initiate associations.

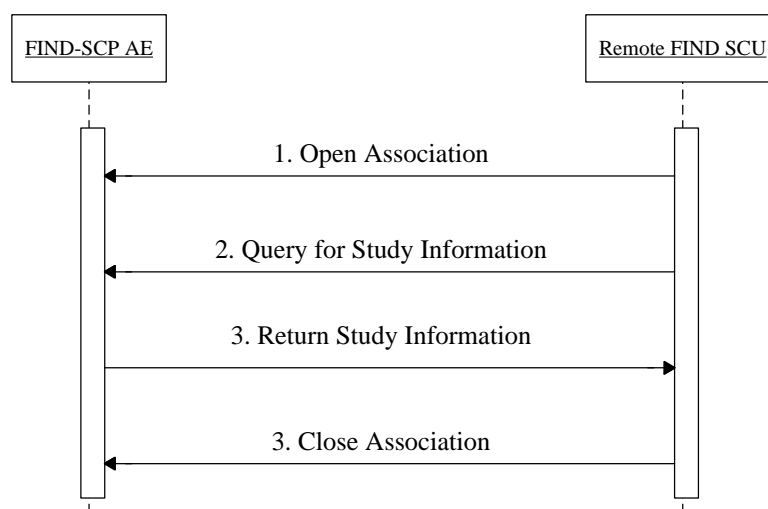
##### 4.2.4.4 Association Acceptance Policy

Incoming connections must be defined from a pre-configured list of known IP addresses, only these connections will be accepted by default. A configuration option for receiving from all IP addresses is available. When FIND-SCP accepts an association, it will process query requests. If the Called AE Title does not match the pre-configured AE Title for the FIND-SCP, the association will be rejected.

##### 4.2.4.4.1 Activity – Receive Query Request

###### 4.2.4.4.1.1 Description and Sequencing of Activities

All queries are matched against records in the database.



**Figure 4.5 Sequencing of Activity – Receive Query Request**



#### 4.2.4.4.1.2 Accepted Presentation Contexts

**Table 4-25 Accepted Presentation Contexts for FIND-SCP and Receive Query Request**

Presentation Context Table					
Abstract Syntax		Transfer Syntax		Role	Extended Negotiation
Name	UID	Name	UID		
See Table 4-21	See Table 4-21	Implicit VR Little Endian	1.2.840.10008.1.2	SCP	None

FIND-SCP will accept a single Presentation Context, specified in the above table.

##### 4.2.4.4.1.2.1 Extended Negotiation

No extended negotiation is performed. In particular, relational queries are not supported.

##### 4.2.4.4.1.3 SOP Specific Conformance

###### 4.2.4.4.1.3.1 SOP Specific Conformance to C-FIND SOP Classes

FIND-SCP provides standard conformance to the supported C-FIND SOP Classes. Only a single information model, Study Root, is supported. Queries may be initiated at the STUDY, SERIES or IMAGE levels.

CANCEL requests may be issued at any time, which will terminate the current query.

A hierarchical model will be followed for data matches. The Identifier shall contain all of the Unique Keys at higher levels and all of the values of the Attributes which were passed in on the C-FIND request. Unsupported attributes requested in a C-FIND request are ignored.

All data matching the passed in criteria at the specified level will be returned on the C-FIND response up to a five hundred response limit. Once the responses have reached the limit a successful response will be sent.

**Table 4-26 Study Root Request Identifier for FIND-SCP**

<b>Name</b>	<b>Tag</b>	<b>Types of Matching</b>
<b>STUDY Level</b>		
Study Date	(0008,0020)	S,*U,R
Study Time	(0008,0030)	S,*U,R
Accession Number	(0008,0050)	S,*U
Modalities In Study	(0008,0061)	S,*U
Referring Physician's Name	(0008,0090)	S,*U
Study Description	(0008,1030)	S,*U
Patient's Name	(0010,0010)	S,*U
Patient's ID	(0010,0020)	S,*U
Study Instance UID	(0020,000D)	UNIQUE
Study ID	(0020,0010)	S,*U
Number of Study Related Instances	(0020,1208)	U
Number of Study Related Series	(0020,1206)	U
Patient's Birth Date	(0010,0030)	S,U,R
Patient's Sex	(0010,0040)	S,U
<b>SERIES Level</b>		
Series Date	(0008,0021)	S,*U,R
Series Time	(0008,0031)	S,*U,R
Modality	(0008,0060)	S,*U
Series Description	(0008,103E)	S,*U
Protocol	(0018,1030)	S,*U
Series Instance UID	(0020,000E)	UNIQUE
Series Number	(0020,0011)	S,*U
Number of Series Related Instances	(0020,1209)	U
<b>IMAGE Level</b>		
SOP Class UID	(0008,0016)	S,*U
SOP Instance UID	(0008,0018)	UNIQUE
Instance Number	(0020,0013)	S,*U
Rows	(0028,0010)	U
Columns	(0028,0011)	U
Bits Allocated	(0028,0100)	U
Number of Frames	(0028,0008)	U

## Types of Matching:

- S Indicates the identifier attribute uses Single Value Matching
- R Indicates Range Matching
- \* Indicates wildcard matching
- U Indicates Universal Matching
- UNIQUE Indicates that this is the Unique Key for that query level, in which case Universal Matching or Single Value Matching is used depending on the query level.

**4.2.4.4.1.3.2 Presentation Context Acceptance Criterion**

FIND-SCP accepts only a single presentation context.

**4.2.4.4.1.3.3 Transfer Syntax Selection Policies**

FIND-SCP uses only Implicit Little Endian Transfer Syntax.

**4.2.4.4.1.3.4 Response Status**

FIND-SCP will behave as described in DICOM PS 3.2 Table D.4.2-24 in response to the status returned in the C-FIND response command message(s).

**Table 4-27 Response Status for FIND-SCP and Receive Query Request**

Service Status	Further Meaning	Status Codes	Behavior
Refused	Out of Resources	A700	Association limit reached
Error	Identifier does not match SOP Class	A900	Query keys are not valid
	Unable to process	Cxxx	Internal processing error
Cancel	Matching terminated due to Cancel request	FE00	Current query is terminated; remaining queries continue
Success	Matching is complete - No final Identifier is supplied	0000	Current query is finished; remaining queries continue
Pending	Matches are continuing - Current Match is supplied and any Optional Keys were supported in the same manner as Required Keys	FF00	All query attributes are supported, matches continuing
	Matches are continuing - Warning that one or more Optional Keys were not supported for existence and/or matching for this Identifier	FF01	One or more query attributes are not supported, matches continuing

**4.2.5 MOVE-SCU****4.2.5.1 SOP Classes**

MOVE-SCU provides Standard Conformance to the following SOP Class(es):

**Table 4-28 SOP Classes Supported by MOVE-SCU**

SOP Class Name	SOP Class UID	SCU	SCP
Study Root Query/Retrieve Information Model – MOVE	1.2.840.10008.5.1.4.1.2.2.2	Yes	No

#### 4.2.5.2 Association Policies

##### 4.2.5.2.1 General

The DICOM standard application context name for DICOM 3.0 is always proposed:

**Table 4-29 DICOM Application Context for MOVE-SCU**

Application Context Name	1.2.840.10008.3.1.1.1
--------------------------	-----------------------

**Table 4-30 Maximum PDU Size Sent for MOVE-SCU**

Maximum PDU size Sent	Unlimited, default is 65536
-----------------------	-----------------------------

##### 4.2.5.2.2 Number of Associations

**Table 4-31 Number of Associations for MOVE-SCU**

Maximum number of simultaneous associations	Configurable
---	--------------

##### 4.2.5.2.3 Asynchronous Nature

MOVE-SCU will only allow a single outstanding operation on an Association. Therefore, MOVE-SCU will not perform asynchronous operations window negotiation.

##### 4.2.5.2.4 Implementation Identifying Information

**Table 4-32 DICOM Implementation Class and Version for MOVE-SCU**

Implementation Class UID	1.3.6.1.4.1.25403.1.1.1
Implementation Version Name	Dicom 0.1

##### 4.2.5.3 Association Initiation Policy

MOVE-SCU attempts to initiate a new association when the user performs a move action from the user interface.

##### 4.2.5.3.1 Activity – Retrieve from Remote AE

###### 4.2.5.3.1.1 Description and Sequencing of Activities

For the entity (study or series) selected from the user interface to be retrieved, an attempt will be made to retrieve it from the selected remote AE. If the retrieve fails, for whatever reason, it will be retried every minute up to 3 times. This number of retries is configurable through the configuration tool.

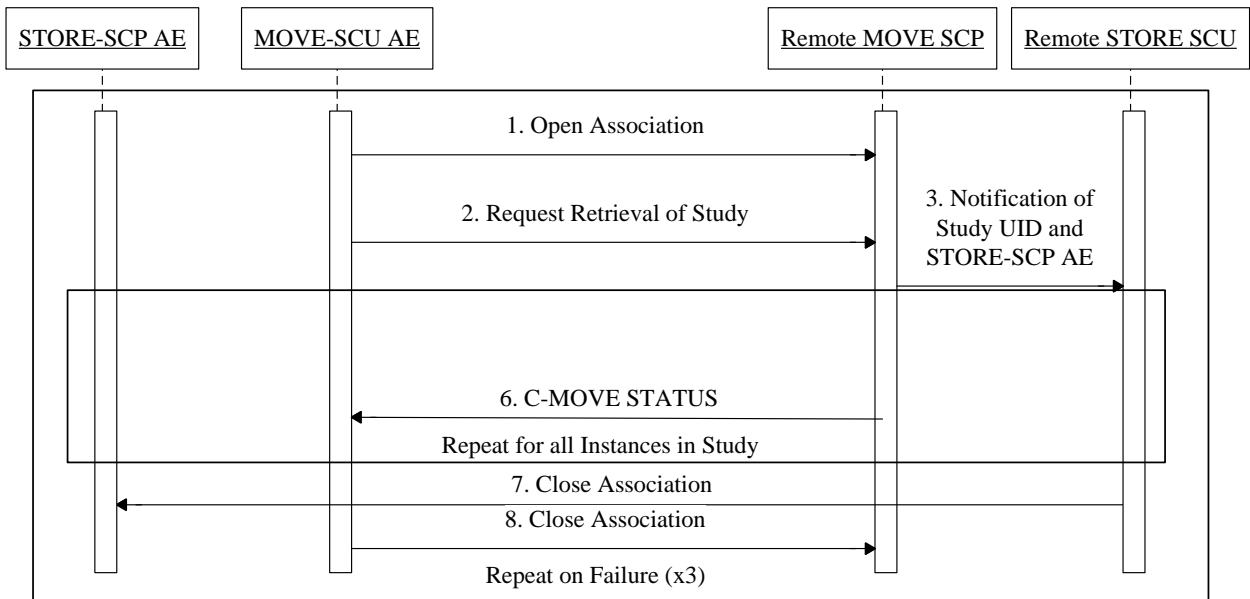


Figure 4.6 Sequencing of Activity – Retrieve from Remote AE

4.2.5.3.1.2 Proposed Presentation Contexts

Table 4-33 Proposed Presentation Contexts for MOVE-SCU and Retrieve from Remote AE

Presentation Context Table					
Abstract Syntax		Transfer Syntax		Role	Extended Negotiation
Name	UID	Name	UID		
See Table 4-28	See Table 4-28	Implicit VR Little Endian	1.2.840.10008.1.2	SCU	None

MOVE-SCU will propose a single Presentation Context.

4.2.5.3.1.2.1 Extended Negotiation

No extended negotiation is performed. In particular, relational retrievals are not supported.

4.2.5.3.1.3 SOP Specific Conformance

4.2.5.3.1.3.1 SOP Specific Conformance to C-MOVE SOP Classes

MOVE-SCU provides standard conformance to the supported C-MOVE SOP Classes. Only a single information model, Study Root, is supported. Retrieval will be performed at the STUDY or SERIES level depending on what level of entity has been selected by the user in the browser. No CANCEL requests are ever issued.

The retrieval is performed from the AE that was specified in the Retrieve AE attribute returned from the query performed by FIND-SCU. The instances are retrieved to the current application’s local database by specifying the destination as the AE Title of the STORE-SCP AE of the local application. This implies that the remote C-MOVE SCP must be preconfigured to determine the presentation address corresponding to the STORE-SCP AE. The STORE-SCP AE will accept storage requests addressed to it from anywhere, so no pre-configuration of the local application to accept from the remote AE is necessary (except to configure the FIND-SCU).

**Table 4-34 Study Root Request Identifier for MOVE-SCU**

Name	Tag	Unique, Matching or Return Key
<b>STUDY level</b>		
Study Instance UID	(0020,000D)	U
<b>SERIES level</b>		
Series Instance UID	(0020,000E)	U

**4.2.5.3.1.3.2 Presentation Context Acceptance Criterion**

MOVE-SCU does not accept associations.

**4.2.5.3.1.3.3 Transfer Syntax Selection Policies**

MOVE-SCU uses only Implicit Little Endian Transfer Syntax.

**4.2.5.3.1.3.4 Response Status**

MOVE-SCU will behave as described in the Table below in response to the status returned in the C-MOVE response command message(s).

**Table 4-35 Response Status for MOVE-SCU and Retrieve from Remote AE Request**

Service Status	Further Meaning	Status Codes	Related Fields	Behavior
Refused	Out of Resources - Unable to calculate number of matches	A701	(0000,0902)	Retrieval is terminated; Retries will occur
	Out of Resources - Unable to perform sub-operations	A702	(0000,1020) (0000,1021) (0000,1022) (0000,1023)	Retrieval is terminated; Retries will occur
	Move Destination unknown	A801	(0000,0902)	Retrieval is terminated; Retries will occur
Failed	Identifier does not match SOP Class	A900	(0000,0901) (0000,0902)	Retrieval is terminated; Retries will occur
	Unable to process	Cxxx	(0000,0901) (0000,0902)	Retrieval is terminated; Retries will occur
Cancel	Sub-operations terminated due to Cancel Indication	FE00	(0000,1020) (0000,1021) (0000,1022) (0000,1023)	Retrieval is terminated; Retries will occur
Warning	Sub-operations Complete - One or more Failures	B000	(0000,1020) (0000,1022) (0000,1023)	Retrieval is terminated; Retry will occur
Success	Sub-operations Complete - No Failures	0000	(0000,1020) (0000,1021) (0000,1022) (0000,1023)	Success of the retrieve
Pending	Sub-operations are continuing	FF00	(0000,1020) (0000,1021) (0000,1022) (0000,1023)	Retrieval continues

#### 4.2.5.3.1.3.5 Sub-operation dependent behavior

Since the C-MOVE operation is dependent on completion of C-STORE sub-operations that are occurring on a separate association, the question of failure of operations on the other association(s) must be considered.

MOVE-SCU completely ignores whatever activities are taking place in relation to the STORAGE-SCP AE that is receiving the retrieved instances. Once the C-MOVE has been initiated it runs to completion (or failure) as described in the C-MOVE response command message(s). There is no attempt by MOVE-SCU to confirm that instances have actually been successfully received or locally stored.

Whether or not completely or partially successful retrievals are made available in the local database to the user is purely dependent on the success or failure of the C-STORE sub-operations, not on any explicit action by MOVE-SCU. If there are any failures that are recoverable, the retrieve will be retried up to a configurable limit, where the default is 3 times on a one minute interval.

If the association on which the C-MOVE was issued is aborted for any reason, whether or not the C-STORE sub-operations continue is dependent on the remote AE; the local STORAGE-SCP will continue to accept associations and storage operations regardless.

#### 4.2.5.4 Association Acceptance Policy

MOVE-SCU does not accept associations.

### 4.2.6 MOVE-SCP

#### 4.2.6.1 SOP Classes

MOVE-SCP provides Standard Conformance to the following SOP Class(es):

**Table 4-36 SOP Classes Supported by MOVE-SCP**

SOP Class Name	SOP Class UID	SCU	SCP
Study Root Query/Retrieve Information Model – MOVE	1.2.840.10008.5.1.4.1.2.2.2	No	Yes

#### 4.2.6.2 Association Policies

##### 4.2.6.2.1 General

MOVE-SCP accepts but never initiates associations.

**Table 4-37 Maximum PDU Size Received for MOVE-SCP**

Maximum PDU size received	Unlimited
---------------------------	-----------

##### 4.2.6.2.2 Number of Associations

**Table 4-38 Number of Associations for MOVE-SCP**

Maximum number of simultaneous associations	Unlimited
---	-----------

##### 4.2.6.2.3 Asynchronous Nature

MOVE-SCP will only allow a single outstanding operation on an Association. Therefore, MOVE-SCP will not perform asynchronous operations window negotiation.

##### 4.2.6.2.4 Implementation Identifying Information

**Table 4-39 DICOM Implementation Class and Version for MOVE-SCP**

Implementation Class UID	1.3.6.1.4.1.25403.1.1.1
Implementation Version Name	Dicom 0.1

**4.2.6.3 Association Initiation Policy**

MOVE-SCP does not initiate associations.

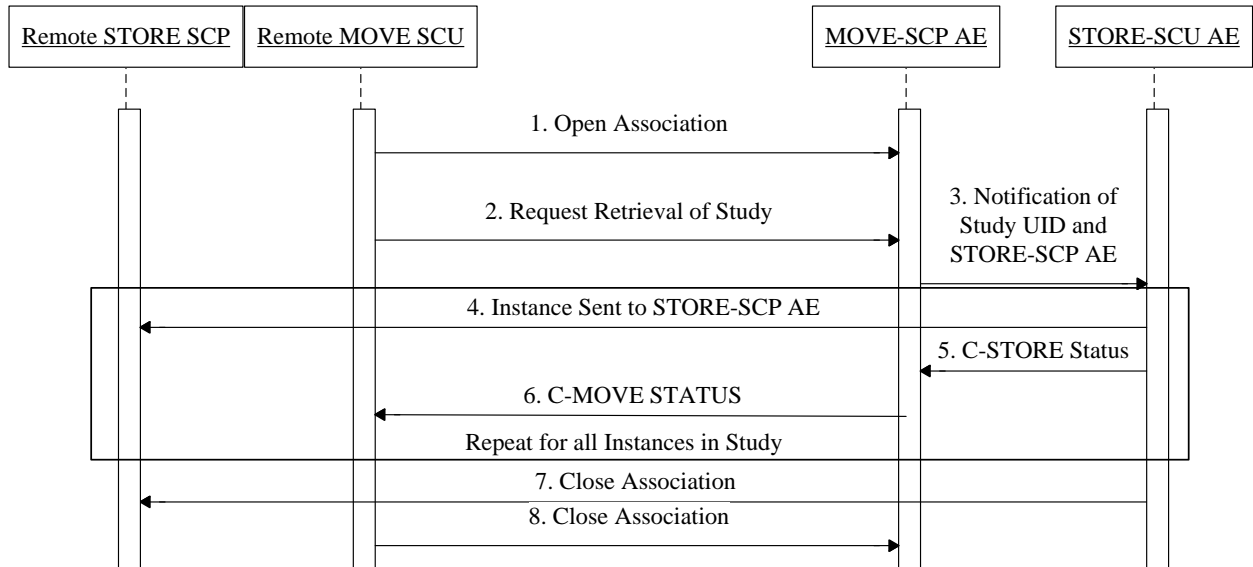
**4.2.6.4 Association Acceptance Policy**

When MOVE-SCP accepts an association, it will respond to retrieve requests. If the Called AE Title does not match the pre-configured AE Title for the RETRIEVE-SCP, the association will be rejected.

**4.2.6.4.1 Activity – Retrieve Request from Remote AE**

**4.2.6.4.1.1 Description and Sequencing of Activities**

When retrieve requests are received, the attributes specified in the request are used to query the database. The instances that match are sent as sub-operations by the STORAGE-SCU to the requested destination.



**Figure 4.7 Sequencing of Activity – Retrieve Request from Remote AE**

**4.2.6.4.1.2 Accepted Presentation Contexts**

**Table 4-40 Accepted Presentation Contexts for MOVE-SCP and Retrieve Request from Remote AE**

Presentation Context Table					
Abstract Syntax		Transfer Syntax		Role	Extended Negotiation
Name	UID	Name	UID		
See Table 4-36	See Table 4-36	Implicit VR Little Endian	1.2.840.10008.1.2	SCP	None

MOVE-SCP will accept a single Presentation Context.

**4.2.6.4.1.2.1 Extended Negotiation**

No extended negotiation is performed. In particular, relational retrievals are not supported.

**4.2.6.4.1.3 SOP Specific Conformance**

**4.2.6.4.1.3.1 SOP Specific Conformance to C-MOVE SOP Classes**

MOVE-SCP provides standard conformance to the supported C-MOVE SOP Classes. Only a single information model, Study Root, is supported. Retrieval may be performed at the STUDY, SERIES or IMAGE level depending on what level of entity has been requested.

CANCEL requests may be issued at any time, which will terminate the current retrieve.



The retrieval is performed to the AE that was specified in the Retrieve AE Destination attribute returned from the query performed by FIND-SCU. The instances are retrieved to the current application's local database by specifying the destination as the AE Title of the STORE-SCP AE of the local application. This implies that the remote C-MOVE SCP must be preconfigured to determine the presentation address corresponding to the STORE-SCP AE. The STORE-SCP AE will accept storage requests addressed to it from anywhere, so no pre-configuration of the local application to accept from the remote AE is necessary. Multiple destination storage requests are supported.

**Table 4-41 Study Root Request Identifier for MOVE-SCP**

Name	Tag	Unique, Matching or Return Key
<b>STUDY level</b>		
Study Instance UID	(0020,000D)	U
<b>SERIES level</b>		
Series Instance UID	(0020,000E)	U
<b>IMAGE level</b>		
SOP Instance UID	(0008,0018)	U

#### 4.2.6.4.1.3.2 Presentation Context Acceptance Criterion

MOVE-SCP accepts only a single Presentation Context.

#### 4.2.6.4.1.3.3 Transfer Syntax Selection Policies

MOVE-SCP accepts only Implicit Little Endian Transfer Syntax.

#### 4.2.6.4.1.3.4 Response Status

MOVE-SCP will behave as described in the Table below in response to the status returned in the C-MOVE response command message(s).

**Table 4-42 Response Status for MOVE-SCP and Retrieve Request from Remote AE**

<b>Service Status</b>	<b>Further Meaning</b>	<b>Status Codes</b>	<b>Related Fields</b>	<b>Behavior</b>
Refused	Out of Resources - Unable to calculate number of matches	A701	(0000,0902)	Association limit reach; Retrieval is terminated;
	Out of Resources - Unable to perform sub-operations	A702	(0000,1020) (0000,1021) (0000,1022) (0000,1023)	Never used in a response
	Move Destination unknown	A801	(0000,0902)	Retrieval is terminated
Failed	Identifier does not match SOP Class	A900	(0000,0901) (0000,0902)	Retrieval is terminated
	Unable to process	Cxxx	(0000,0901) (0000,0902)	Retrieval is terminated
Cancel	Sub-operations terminated due to Cancel Indication	FE00	(0000,1020) (0000,1021) (0000,1022) (0000,1023)	Retrieval is terminated
Warning	Sub-operations Complete - One or more Failures	B000	(0000,1020) (0000,1022) (0000,1023)	Retrieval is terminated
Success	Sub-operations Complete - No Failures	0000	(0000,1020) (0000,1021) (0000,1022) (0000,1023)	Retrieval is finished
Pending	Sub-operations are continuing	FF00	(0000,1020) (0000,1021) (0000,1022) (0000,1023)	Retrieval continues

**4.2.6.4.1.3.5 Sub-operation dependent behavior**

Since the C-MOVE operation is dependent on completion of C-STORE sub-operations that are occurring on a separate association by the STORAGE-SCU, the question of failure of operations on the other association(s) must be considered. Once the C-MOVE has been initiated it runs to completion (or failure) as described in the C-MOVE response command message(s). There is no attempt by MOVE-SCU to confirm that instances have actually been locally stored. If the association on which the C-MOVE was issued is aborted for any reason, the C-STORE sub-operations are halted. Failures are automatically retried based on the STORAGE-SCU configuration for each of the destinations specified in the C-MOVE request.

**4.2.7 STORAGE-SCU****4.2.7.1 SOP Classes**

STORAGE-SCU provide Standard Conformance to the following SOP Class(es): see Table 1-1 Network Services

#### 4.2.7.2 Association Policies

##### 4.2.7.2.1 General

STORAGE-SCU initiates, but never accepts associations.

**Table 4-43 Maximum PDU Size Sent for STORAGE-SCU**

Maximum PDU size sent	Unlimited, default is 16384
-----------------------	-----------------------------

##### 4.2.7.2.2 Number of Associations

**Table 4-44 Number of Associations for STORAGE-SCU**

Maximum number of simultaneous associations	1
---	---

##### 4.2.7.2.3 Asynchronous Nature

STORAGE-SCU will only allow a single outstanding operation on an Association. Therefore, STORAGE-SCU will not perform asynchronous operations window negotiation.

##### 4.2.7.2.4 Implementation Identifying Information

**Table 4-45 DICOM Implementation Class and Version for STORAGE-SCU**

Implementation Class UID	1.3.6.1.4.1.25403.1.1.1
Implementation Version Name	Dicom 0.1

#### 4.2.7.3 Association Initiation Policy

STORAGE-SCU initiates a new association when the user performs an export action from the user interface.

##### 4.2.7.3.1 Activity – Request Storage

###### 4.2.7.3.1.1 Description and Sequencing of Activities

A user can select images and request them to be sent to a pre-configured destination. Each request is forwarded to the job queue and processed individually.

STORAGE-SCU is invoked by the job control interface that is responsible for processing export tasks. The job consists of data describing the instances to be stored and the destination. An internal daemon process triggered by a job for a specific network destination initiates a C-STORE request to store images. If the process successfully establishes an Association to a remote Application Entity, it will transfer each marked instance one after another via the open Association. Status of the transfer is reported through the job control interface. Only one job will be active at a time. If the C-STORE Response from the remote Application contains a status other than Success or Warning, the Association is aborted and the related Job is switched to a retry state. It will be retried automatically up to 5 times.

The Storage AE attempts to initiate a new Association in order to issue a C-STORE request. If the job contains multiple images then multiple C-STORE requests will be issued over the same Association.

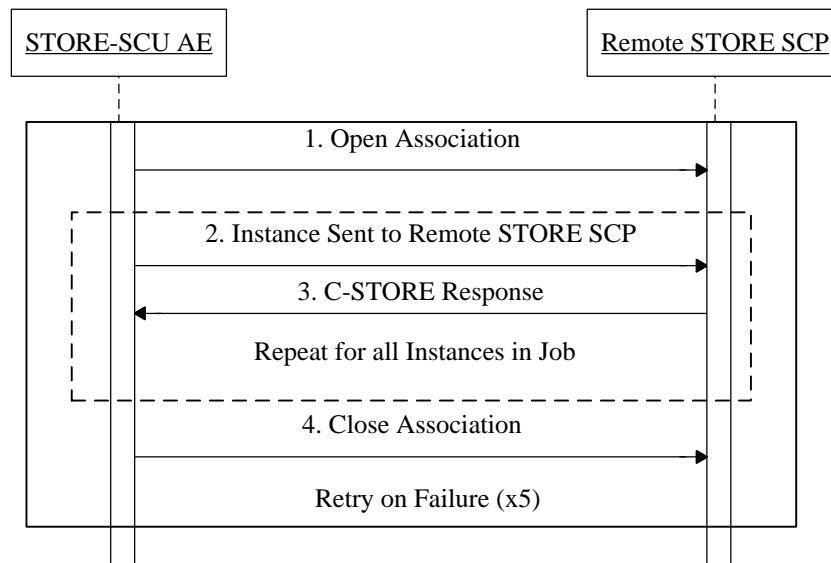


Figure 4.8 Sequencing of Activity –Request Storage

#### 4.2.7.3.1.2 Accepted Presentation Contexts

Table 4-46 Proposed Presentation Contexts for STORAGE-SCU and Request Storage

Presentation Context Table					
Abstract Syntax		Transfer Syntax		Role	Extended Negotiation
Name	UID	Name	UID		
See Table 1-1 "Transfer"	See Table 1-1 "Transfer"	Implicit VR Little Endian	1.2.840.10008.1.2	SCU	None
		Explicit VR Little Endian	1.2.840.10008.1.2.1	SCU	None
		JPEG Lossless, Non-Hierarchical (Process 14)	1.2.840.10008.1.2.4.57	SCU	None
		JPEG Lossless, Non-Hierarchical First-Order Prediction	1.2.840.10008.1.2.4.70	SCU	None
		JPEG 2000 Image Compression (Lossless Only)	1.2.840.10008.1.2.4.90	SCU	None
		JPEG Baseline (Process 1)	1.2.840.10008.1.2.4.50	SCU	None
		JPEG Extended (Process 2 & 4)	1.2.840.10008.1.2.4.51	SCU	None
		JPEG Spectral Selection, Non-Hierarchical (Process 6 & 8) (Retired)	1.2.840.10008.1.2.4.53	SCU	None
		JPEG Full Progression, Non-Hierarchical (Process 10 & 12) (Retired)	1.2.840.10008.1.2.4.55	SCU	None
		JPEG 2000 Image Compression	1.2.840.10008.1.2.4.91	SCU	None
		RLE Lossless	1.2.840.10008.1.2.4.5	SCU	None

##### 4.2.7.3.1.2.1 Extended Negotiation

No extended negotiation is performed, though STORAGE-SCU.

**4.2.7.3.1.3 SOP Specific Conformance**

**4.2.7.3.1.3.1 SOP Specific Conformance to Storage SOP Classes**

STORAGE-SCU provides standard conformance to the Storage Service Class.

**4.2.7.3.1.3.2 Presentation Context Acceptance Criterion**

STORAGE-SCU does not accept associations.

**4.2.7.3.1.3.3 Transfer Syntax Selection Policies**

STORAGE-SCU prefers JPEG Lossless transfer syntaxes. If offered a choice of Transfer Syntaxes in a Presentation Context, it will apply the following priority to the choice of Transfer Syntax:

- First encountered JPEG Lossless Transfer Syntax
- First encountered Implicit Transfer Syntax
- Default Transfer Syntax

**4.2.7.3.1.3.4 Response Status**

STORAGE-SCU will behave as described in the Table below when generating the C-STORE response command message.

**Table 4-47 Response Status for STORAGE-SCU and Request Storage**

Service Status	Further Meaning	Status Codes	Reason
Refused	Out of Resources	A7xx	Job set to Retry state
Error	Data Set does not match SOP Class	A9xx	Job set to Failed state
	Cannot understand	Cxxx	Job set to Retry state
Warning	Coercion of Data Elements	B000	Job set to Complete state
	Data Set does not match SOP Class	B007	Job set to Failed state
	Elements Discarded	B006	Job set to Complete state
Success		0000	Job set to Complete state

**4.2.7.4 Association Acceptance Policy**

STORAGE-SCU does not accept associations.

**4.2.8 STORAGE-SCP**

**4.2.8.1 SOP Classes**

STORAGE-SCP provide Standard Conformance to the following SOP Class(es): see Table 1-1 Network Services

**4.2.8.2 Association Policies**

**4.2.8.2.1 General**

STORAGE-SCP accepts but never initiates associations.

**Table 4-48 Maximum PDU Size Received for STORAGE-SCP**

Maximum PDU size received	Unlimited, default is 16384
---------------------------	-----------------------------

#### 4.2.8.2.2 Number of Associations

**Table 4-49 Number of Associations for STORAGE-SCP**

Maximum number of simultaneous associations	Unlimited
---	-----------

#### 4.2.8.2.3 Asynchronous Nature

STORAGE-SCP will not perform asynchronous operations window negotiation for outstanding negotiations.

#### 4.2.8.2.4 Implementation Identifying Information

**Table 4-50 DICOM Implementation Class and Version for STORAGE-SCP**

Implementation Class UID	1.2.840.113747.20080222
Implementation Version Name	VIMS_1.0

#### 4.2.8.3 Association Initiation Policy

STORAGE-SCP does not initiate associations.

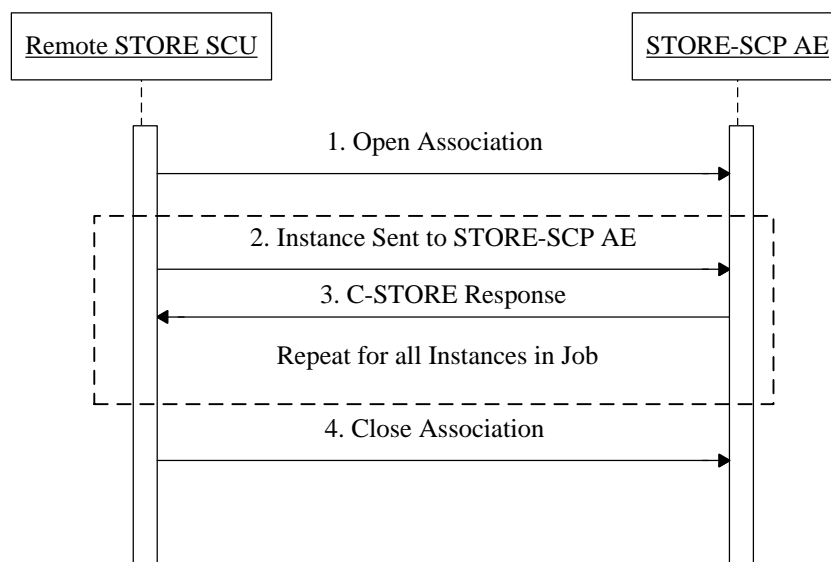
#### 4.2.8.4 Association Acceptance Policy

When STORAGE-SCP accepts an association, it will respond to storage requests. The exact behavior for a given AE title can be configured by service personnel. A configuration option for receiving only from known IP addresses is available, by default all incoming connections are accepted.

#### 4.2.8.4.1 Activity – Receive Storage Request

##### 4.2.8.4.1.1 Description and Sequencing of Activities

As instances are received they are written to the local file system and a record inserted into the temporary database. If the received instance is a duplicate of a previously received instance, the old file will be overwritten with the new one, however the database records will not. At a later time, the received DICOM instances will be moved to the local disk, updated in the permanent tables, and are then made available for viewing.



**Figure 4.9 Sequencing of Activity – Receive Storage Request**

## 4.2.8.4.1.2 Accepted Presentation Contexts

Table 4-51 Accepted Presentation Contexts for STORAGE-SCP and Receive Storage Request

Presentation Context Table					
Abstract Syntax		Transfer Syntax		Role	Extended Negotiation
Name	UID	Name	UID		
See Table 1-1 "Transfer"	See Table 1-1 "Transfer"	Implicit VR Little Endian	1.2.840.10008.1.2	SCP	None
		Explicit VR Little Endian	1.2.840.10008.1.2.1	SCP	None
		JPEG Lossless, Non-Hierarchical (Process 14)	1.2.840.10008.1.2.4.57	SCP	None
		JPEG Lossless, Non-Hierarchical First-Order Prediction	1.2.840.10008.1.2.4.70	SCP	None
		JPEG 2000 Image Compression (Lossless Only)	1.2.840.10008.1.2.4.90	SCP	None
		JPEG Baseline (Process 1)	1.2.840.10008.1.2.4.50	SCP	None
		JPEG Extended (Process 2 & 4)	1.2.840.10008.1.2.4.51	SCP	None
		JPEG Spectral Selection, Non-Hierarchical (Process 6 & 8) (Retired)	1.2.840.10008.1.2.4.53	SCP	None
		JPEG Full Progression, Non-Hierarchical (Process 10 & 12) (Retired)	1.2.840.10008.1.2.4.55	SCP	None
		JPEG 2000 Image Compression	1.2.840.10008.1.2.4.91	SCP	None
		RLE Lossless	1.2.840.10008.1.2.4.5	SCP	None

## 4.2.8.4.1.2.1 Extended Negotiation

No extended negotiation is performed, though STORAGE-SCP:

- Is a Level 2 Storage SCP (Full – does not discard any data elements)
- Does not support digital signatures
- Does not coerce any received data elements

## 4.2.8.4.1.3 SOP Specific Conformance

## 4.2.8.4.1.3.1 SOP Specific Conformance to Storage SOP Classes

STORAGE-SCP provides standard conformance to the Storage Service Class. STORAGE-SCP does not support Grayscale Softcopy Presentation State as required by Enhanced CT Image Storage and Enhanced MR Image Storage.

## 4.2.8.4.1.3.2 Presentation Context Acceptance Criterion

STORAGE-SCP will always accept any Presentation Context for the supported SOP Classes with the supported Transfer Syntaxes. More than one proposed Presentation Context will be accepted for the same Abstract Syntax if the Transfer Syntax is supported, whether or not it is the same as another Presentation Context.

## 4.2.8.4.1.3.3 Transfer Syntax Selection Policies

STORAGE-SCP prefers JPEG Lossless Transfer Syntaxes. If offered a choice of Transfer Syntaxes in a Presentation Context, it will apply the following priority to the choice of Transfer Syntax:

- First encountered JPEG Lossless Transfer Syntax
- First encountered Implicit Transfer Syntax
- Default Transfer Syntax

STORAGE-SCP will accept duplicate Presentation Contexts, that is, if it is offered multiple Presentation Contexts, each of which offers acceptable Transfer Syntaxes, it will accept all Presentation Contexts, applying the same priority for selecting a Transfer Syntax for each.

#### 4.2.8.4.1.3.4 Response Status

STORAGE-SCP will behave as described in the Table below when generating the C-STORE response command message.

**Table 4-52 Response Status for STORAGE-SCP and Receive Storage Request**

Service Status	Further Meaning	Status Codes	Reason
Refused	Out of Resources	A7xx	Association limit reached, local disk space low
Error	Data Set does not match SOP Class	A9xx	Never sent – data set is not checked prior to storage
	Cannot understand	Cxxx	Internal processing error
Warning	Coercion of Data Elements	B000	Never sent - no coercion is ever performed
	Data Set does not match SOP Class	B007	Never sent - data set is not checked prior to storage
	Elements Discarded	B006	Never sent – all elements are always stored
Success		0000	

## 4.2.9 PRINT-SCU

### 4.2.9.1 SOP Classes

PRINT-SCU provides Standard Conformance to the following SOP Classes:

**Table 4-53 SOP Classes for PRINT-SCU**

SOP Class Name	SOP Class UID	SCU	SCP
Basic Grayscale Print Management Meta SOP Class	1.2.840.10008.5.1.1.9	Yes	No
Basic Color Print Management Meta SOP Class	1.2.840.10008.5.1.1.18	Yes	No

### 4.2.9.2 Association Policies

#### 4.2.9.2.1 General

PRINT-SCU initiates, but never accepts associations.

#### 4.2.9.2.2 Number of Associations

**Table 4-54 Number of Associations for PRINT-SCU**

Maximum number of simultaneous associations	1
---	---

#### 4.2.9.2.3 Asynchronous Nature

PRINT-SCU will only allow a single outstanding operation on an Association. Therefore, PRINT-SCU will not perform asynchronous operations window negotiation.

#### 4.2.9.2.4 Implementation Identifying Information

**Table 4-55 DICOM Implementation Class and Version for PRINT-SCU**

Implementation Class UID	1.3.6.1.4.1.25403.1.1.1
Implementation Version Name	Dicom 0.1



4.2.9.3 Association Initiation Policy

PRINT-SCU initiates a new association when the user performs a print action from the user interface.

4.2.9.3.1 Activity – Request Print

4.2.9.3.1.1 Description and Sequencing of Activities

A user can select images and request them to be printed to a pre-configured print server. Each request is forwarded to a job queue and processed individually. Only one print job may be active at a time, but any number of jobs may be in the queue, and are serviced on a first-come, first-serve basis. Each print job results in a separate association, but each print job may contain multiple film boxes. If a print job is not successful, it will be marked as failed and will be retried up to 5 times.

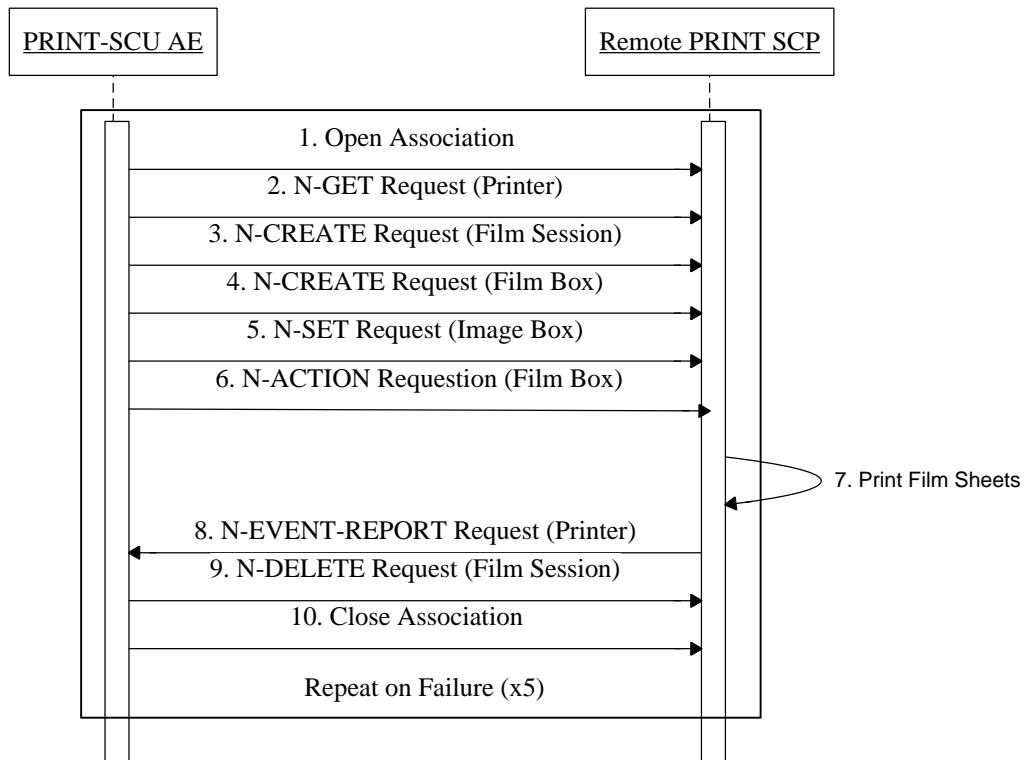


Figure 4.10 Sequencing of Activity – Request Print

4.2.9.3.1.2 Proposed Presentation Contexts

Table 4-56 Proposed Presentation Contexts for PRINT-SCU

Presentation Context Table					
Abstract Syntax		Transfer Syntax		Role	Extended Negotiation
Name	UID	Name List	UID List		
See Table 4-53	See Table 4-53	Implicit VR Little Endian	1.2.840.10008.1.2	SCU	None

4.2.9.3.1.3 SOP Specific Conformance

4.2.9.3.1.3.1 Specific Conformance to Basic Grayscale Print Management Meta SOP Class

PRINT-SCU supports the following mandatory SOP classes as defined by the Basic Grayscale Print Management Meta SOP Class:

Table 4-57 SOP Classes for Basic Grayscale Print management Meta SOP Class

SOP Class Name	SOP Class UID	SCU	SCP
Basic Film Session	1.2.840.10008.5.1.1.1	Yes	No
Basic Film Box	1.2.840.10008.5.1.1.2	Yes	No
Basic Grayscale Image Box	1.2.840.10008.5.1.1.4	Yes	No
Printer	1.2.840.10008.5.1.1.16	Yes	No

The specific SOP Conformance statement for each of the Basic Grayscale Print Management Meta SOP Class components is described in the subsequent sections.

#### 4.2.9.3.1.3.1.1 Specific Conformance for Basic Film Session SOP Class

PRINT-SCU provides support for the following DIMSE Services:

- N-CREATE
- N-SET
- N-ACTION
- N-DELETE

##### 4.2.9.3.1.3.1.1.1 Basic Film Session SOP Class Operations for N-CREATE

The EXAMPLE-PRINT-SERVER-MANAGEMENT provides the following support for the Film Session attributes sent by the N-CREATE DIMSE service:

**Table 4-58 Basic Film Session SOP Class N-CREATE Request Attributes**

Attribute	Tag	Valid Range	Default Value
Number of Copies	(2000,0010)	1 – 99	1
Print Priority	(2000,0020)	LOW MED HIGH	LOW
Medium Type	(2000,0030)	CLEAR FILM BLUE FILM PAPER STORED PRINT	Current configured setting
Film Destination	(2000,0040)	MAGAZINE PROCESSOR STORED PRINT	Current configured setting
Film Session Label	(2000,0050)	Any string	Empty String

PRINT-SCU will behave as described in the Table below when receiving the N-CREATE response command message.

**Table 4-59 Film Session SOP Class N-CREATE Response Status Handling Reasons**

Service Status	Further Meaning	Error Code	Reason
Success	Success	0000	The N-CREATE operation is successful.
Warning	Attribute Value Out of Range	0116	The N-CREATE operation is considered successful but the status meaning is logged.
Warning	Memory allocation not supported	B600	N-CREATE operation is considered successful, but the status meaning is logged.
Warning	Attribute List Error	0107	The N-CREATE operation is considered successful but the status meaning is logged
Failure	Invalid attribute value	0106	The N-CREATE operation failed, and the print job is marked as failed.
Failure	Processing failure	0110	The N-CREATE operation failed, and the print job is marked as failed.
Failure	Invalid object instance	0117	The N-CREATE operation failed, and the print job is marked as failed.
Failure	Resource limitation	0213	The N-CREATE operation failed, and the print job is marked as failed.

## 4.2.9.3.1.3.1.1.2 Film Session SOP Class Operations for N-SET

PRINT-SCU provides the support for the Film Session attributes sent by the N-SET DIMSE service identically as it is described for the Film Session with N-CREATE, Table 4-58.

The Print Server Management behavior and specific status codes sent for the N-SET of a specific Film Session is described in the following table:

**Table 4-60 Film Session SOP Class N-SET Response Status Handling Reasons**

Service Status	Further Meaning	Error Code	Reason
Success	Success	0000	The N-SET operation is successful.
Warning	Attribute Value Out of Range	0116	The N-SET operation is considered successful
Warning	Attribute List Error	0107	The N-SET operation is considered successful
Warning	Memory allocation not supported	B600	The N-SET operation is considered successful
Failure	Invalid attribute value	0106	The N-SET operation failed, and the print job is marked as failed.
Failure	Processing failure	0110	The N-SET operation failed, and the print job is marked as failed.
Failure	Invalid object instance	0112	The N-SET operation failed, and the print job is marked as failed.

## 4.2.9.3.1.3.1.1.3 Film Session SOP Class Operations for N-DELETE

PRINT-SCU behavior and specific status codes sent for the N-DELETE of a specific Film Session is described in the following table:

**Table 4-61 Film Session SOP Class N-DELETE Response Status Handling Reasons**

Service Status	Further Meaning	Error Code	Reason
Success	Success	0000	The SCP has completed the operation successfully. Film session has been successfully deleted.
Failure	Unknown UID	0112	No such object instance: the instance UID given does not exist. The Association is aborted using A-ABORT and the print-job is marked as failed. The status meaning is logged.

## 4.2.9.3.1.3.1.1.4 Film Session SOP Class Operations for N-ACTION

PRINT-SCU behavior and specific status codes sent for the N-ACTION of a specific Film Session is described in the following table:

**Table 4-62 Film Session SOP Class N-ACTION Response Status Handling Reasons**

Service Status	Further Meaning	Error Code	Reason
Success	Success	0000	N-ACTION operation is successful.
Warning	Empty film page	B602	N-ACTION operation is considered successful.
Warning	Image larger than Image	B604	N-ACTION operation is considered successful.

	Box		
Warning	Image larger than Image Box	B609	N-ACTION operation is considered successful.
Warning	Image larger than Image Box	B60A	N-ACTION operation is considered successful.
Failure	Invalid object	0112	The N-ACTION operation failed, and the print job is marked as failed.
Failure	Invalid operation	0211	The N-ACTION operation failed, and the print job is marked as failed.
Failure	Processing failure	C600	The N-ACTION operation failed, and the print job is marked as failed.
Failure	OUT of Resources	C601	The N-ACTION operation failed, and the print job is marked as failed.
Failure	Wrong Image size	C603	The N-ACTION operation failed, and the print job is marked as failed.
Failure	Wrong Print Image size	C613	The N-ACTION operation failed, and the print job is marked as failed.

#### 4.2.9.3.1.3.1.2 Specific Conformance for Basic Film Box SOP Class

PRINT-SCU provides support for the following DIMSE Services:

- N-CREATE
- N-SET
- N-ACTION
- N-DELETE

#### 4.2.9.3.1.3.1.2.1 Basic Film Box SOP Class Operations for N-CREATE

PRINT-SCU provides the following support for the Film Box attributes sent by the N-CREATE DIMSE service.

**Table 4-63 Basic Film Box SOP Class N-CREATE Request Attributes**

Attribute	Tag	Valid Range	Default Value if not sent by SCU or invalid value received
Image Display Format	(2010,0010)	STANDARD\C,ROW\R1,R2,R3 COL\C1,C2,C3	Configurable
Film Orientation	(2010,0040)	PORTRAIT LANDSCAPE	Configurable
Film Size Id	(2010,0050)	8INX10IN 11INX14IN 14INX17IN	Configurable
Magnification Type	(2010,0060)	REPLICATE BILINEAR CUBIC NONE	Configurable
Min Density	(2010,0120)	170-350	Configurable
Max Density	(2010,0130)	170-350	Configurable
Smoothing Type	(2010,0080)	0-15, the value is laser specific.	Configurable
Border Density	(2010,0100)	WHITE BLACK	Configurable
Trim	(2010,0140)	YES NO	Configurable

PRINT-SCU behavior and specific status codes sent for the N-CREATE of a specific Film Box is described in the following table:

**Table 4-64 Film Box SOP Class N-CREATE Response Status Handling Behavior**

Service Status	Further Meaning	Error Code	Behavior
Success	Success	0000	The N-CREATE operation is successful.
Warning	Attribute Value Out of Range	0116	The N-CREATE operation is assumed to be successful.
Warning	Min/Max Density out-range	B605	The N-CREATE operation is assumed to be successful.
Failure	Invalid attribute value	0106	The N-CREATE operation failed, and the print job is marked as failed.
Failure	Processing failure	0110	The N-CREATE operation failed, and the print job is marked as failed.
Failure	Duplicate SOP instance	0111	The N-CREATE operation failed, and the print job is marked as failed.
Failure	Invalid object instance	0117	The N-CREATE operation failed, and the print job is marked as failed.
Failure	Missing attribute	0120	The N-CREATE operation failed, and the print job is marked as failed.
Failure	Missing attribute value	0121	The N-CREATE operation failed, and the print job is marked as failed.
Failure	Resource limitation	0213	The N-CREATE operation failed, and the print job is marked as failed.
Failure	Out of Print Job Sequence	C616	The N-CREATE operation failed, and the print job is marked as failed.

#### 4.2.9.3.1.3.1.2.2 Basic Film Box SOP Class Operations for N-SET

PRINT-SCU provides the support for the following Film Box attributes sent by the N-SET DIMSE service:

**Table 4-65 Basic Film Box SOP Class N-SET Request Attributes**

Attribute	Tag	Valid Range	Default Value if not sent by SCU or invalid value received
Magnification Type	(2010,0060)	REPLICATE BILINEAR CUBIC NONE	Configurable
Min Density	(2010,0120)	170-350	Configurable
Max Density	(2010,0130)	170-350	Configurable
Smoothing Types	(2010,0080)	0-15, the value is laser specific.	Configurable
Border Density	(2010,0100)	WHITE BLACK	Configurable
Trim	(2010,0140)	YES NO	Configurable

PRINT-SCU behavior and specific status codes sent for the N-SET of a specific Film Box is described in the following table:

**Table 4-66 Film Box SOP Class N-SET Response Status Handling Behavior**

<b>Service Status</b>	<b>Further Meaning</b>	<b>Error Code</b>	<b>Behavior</b>
Success	Success	0000	The N-SET operation is successful.
Warning	Illegal Attribute	0107	The N-SET operation is assumed to be successful.
Warning	Attribute out of range	0116	The N-SET operation is assumed to be successful.
Failure	Invalid attribute value	0106	The N-SET operation failed, and the print job is marked as failed.
Failure	Processing failure	0110	The N-SET operation failed, and the print job is marked as failed.
Failure	No object instance	0112	The N-SET operation failed, and the print job is marked as failed.
Failure	Missing attribute value	0121	The N-SET operation failed, and the print job is marked as failed.

#### 4.2.9.3.1.3.1.2.3 Basic Film Box SOP Class Operations for N-DELETE

PRINT-SCU provides the support for deleting the last created Film Box.

The specific behavior and status codes sent for the N-DELETE of the last created Film Box is described in the following table:

**Table 4-67 Film Box SOP Class N-DELETE Response Handling Behavior**

<b>Service Status</b>	<b>Further Meaning</b>	<b>Error Code</b>	<b>Behavior</b>
Success	Success	0000	The N-DELETE operation is successful.
Failure	Illegal UID	0112	The N-DELETE operation failed, and the print job is marked as failed.

## 4.2.9.3.1.3.1.2.4 Basic Film Box SOP Class Operations for N-Action

PRINT-SCU provides the support for submitting the print job for printing the specific Film Box. The Film BOX N-ACTION arguments are defined in the DICOM Standard PS 3.4, table H.4-8.

The specific behavior and status codes sent for the N-ACTION of the specific Film Box is described in the following table:

**Table 4-68 Film Box SOP Class N-ACTION Response Handling Behavior**

<b>Service Status</b>	<b>Further Meaning</b>	<b>Error Code</b>	<b>Behavior</b>
Success	Success	0000	The N-ACTION operation is successful, and the film is accepted for printing.
Warning	Empty Film Page	B603	The N-ACTION operation is considered successful, but the empty page will not be printed.
Warning	Image larger than Image Box	B604	The N-ACTION operation is considered successful.
Warning	Image larger than Image Box	B609	The N-ACTION operation is considered successful.
Warning	Image larger than Image Box	B60A	The N-ACTION operation is considered successful.
Failure	Out of Resources	C602	The N-ACTION operation failed, and the print job is marked as failed.
Failure	Wrong Image size	C603	The N-ACTION operation failed, and the print job is marked as failed.
Failure	Wrong Print Image size	C613	The N-ACTION operation failed, and the print job is marked as failed.

#### 4.2.9.3.1.3.1.3 Specific Conformance for Image Box SOP Class

PRINT-SCU provides the following support for the attributes contained in the N-SET DIMSE Service of the Basic Grayscale Image Box SOP Class:

**Table 4-69 Image Box SOP Class N-SET Request Attributes**

Attribute	Tag	Valid Range	Default Value if not sent by SCU or invalid value received
Image Position	(2020,0010)	1 - Max number of images for Display Format	Mandatory, no default.
Basic Grayscale Image Sequence	(2020,0110)	N/A	N/A
>Samples Per Pixel	(0028,0002)	1	Mandatory, no default.
>Photometric Interpretation	(0028,0004)	MONOCHROME1 MONOCHROME2	Mandatory, no default.
>Rows	(0028,0010)	1 – Maximum rows for film size	Mandatory, no default.
>Columns	(0028,0011)	1 – Maximum columns for film size.	Mandatory, no default.
>Pixel Aspect Ratio	(0028,0034)	Any pair of valid positive integers (1 to 215-1)	No default
>Bits Allocated	(0028,0100)	8 or 16	Mandatory, no default.
>Bits Stored	(0028,0101)	8 – 16	Mandatory, no default.
>High Bit	(0028,0102)	7-15	Mandatory, no default.
>Pixel Representation	(0028,0103)	0 = unsigned 1 = 2's Complement	Mandatory, no default.
Polarity	(2020,0020)	NORMAL REVERSE	NORMAL
Magnification Type	(2010,0060)	REPLICATE BILINEAR CUBIC NONE	Configurable
Smoothing Type	(2010,0080)	0-15, the value is laser specific.	Configurable



PRINT-SCU behavior and specific status codes sent for the N-SET of a specific Image Box is described in the following table:

**Table 4-70 Image Box SOP Class N-SET Response Status Handling Behavior**

Service Status	Further Meaning	Error Code	Behavior
Success	Success	0000	The N-SET operation is successful.
Warning	Attribute out of range	0116	The N-SET operation is considered successful.
Warning	Image larger than Image Box	B604	The N-SET operation is considered successful.
Warning	Image larger than Image Box	B609	The N-SET operation is considered successful.
Warning	Image larger than Image Box	B60A	The N-SET operation is considered successful.
Failure	No object instance	0112	The N-SET operation failed, and the print job is marked as failed.
Failure	Missing attributes	0120	The N-SET operation failed, and the print job is marked as failed.
Failure	Missing attribute value	0121	The N-SET operation failed, and the print job is marked as failed.
Failure	Image size doesn't match	C603	The N-SET operation failed, and the print job is marked as failed.
Failure	Out of Resources	C605	The N-SET operation failed, and the print job is marked as failed.

#### 4.2.9.3.1.3.1.4 Specific Conformance for Printer SOP Class

PRINT-SCU never issues N-GET or N-EVENT-REPORT requests for the Printer SOP Class.

#### 4.2.9.3.1.3.2 Specific Conformance to Basic Color Print Management Meta SOP Class

PRINT-SCU supports the following mandatory SOP classes as defined by the Basic Color Print Management Meta SOP Class:

**Table 4-71 SOP Classes for Basic Color Print Management Meta SOP Class**

SOP Class Name	SOP Class UID	SCU	SCP
Basic Film Session	1.2.840.10008.5.1.1.1	Yes	No
Basic Film Box	1.2.840.10008.5.1.1.2	Yes	No
Basic Color Image Box	1.2.840.10008.5.1.1.4.1	Yes	No
Printer	1.2.840.10008.5.1.1.16	Yes	No

The specific SOP Conformance statement for each of the Basic Color Print Management Meta SOP Class components is described in the subsequent sections.

#### 4.2.9.3.1.3.2.1 Specific Conformance for Basic Film Session SOP Class

See Section 4.2.9.3.1.3.1.1

#### 4.2.9.3.1.3.2.2 Specific Conformance for Basic Film Box SOP Class

See Section 4.2.9.3.1.3.1.2

#### 4.2.9.3.1.3.2.3 Specific Conformance for Basic Color Image Box SOP Class

PRINT-SCU provides the following support for the attributes contained in the N-SET DIMSE Service of the Basic Color Image Box SOP Class:

**Table 4-72 Image Box SOP Class N-SET Request Attributes**

<b>Attribute</b>	<b>Tag</b>	<b>Valid Range</b>	<b>Default Value if not sent by SCU or invalid value received</b>
Image Position	(2020,0010)	1 - Max number of images for Display Format	Mandatory, no default.
Basic Color Image Sequence	(2020,0111)	N/A	N/A
>Samples Per Pixel	(0028,0002)	3	Mandatory, no default.
>Photometric Interpretation	(0028,0004)	RGB	Mandatory, no default.
>Rows	(0028,0010)	1 – Maximum rows for film size	Mandatory, no default.
>Columns	(0028,0011)	1 – Maximum columns for film size.	Mandatory, no default.
>Pixel Aspect Ratio	(0028,0034)	Any pair of valid positive integers (1 to 215-1)	No default
>Bits Allocated	(0028,0100)	8 or 16	Mandatory, no default.
>Bits Stored	(0028,0101)	8 – 16	Mandatory, no default.
>High Bit	(0028,0102)	7-15	Mandatory, no default.
>Pixel Representation	(0028,0103)	0 = unsigned 1 = 2's Complement	Mandatory, no default.
Polarity	(2020,0020)	NORMAL REVERSE	NORMAL
Magnification Type	(2010,0060)	REPLICATE BILINEAR CUBIC NONE	Configurable
Smoothing Type	(2010,0080)	0-15, the value is laser specific.	Configurable

PRINT-SCU behavior and specific status codes sent for the N-SET of a specific Image Box is described in the following table:

**Table 4-73 Image Box SOP Class N-SET Response Status Handling Behavior**

Service Status	Further Meaning	Error Code	Behavior
Success	Success	0000	The N-SET operation is successful.
Warning	Attribute out of range	0116	The N-SET operation is considered successful.
Warning	Image larger than Image Box	B604	The N-SET operation is considered successful.
Warning	Image larger than Image Box	B609	The N-SET operation is considered successful.
Warning	Image larger than Image Box	B60A	The N-SET operation is considered successful.
Failure	No object instance	0112	The N-SET operation failed, and the print job is marked as failed.
Failure	Missing attributes	0120	The N-SET operation failed, and the print job is marked as failed.
Failure	Missing attribute value	0121	The N-SET operation failed, and the print job is marked as failed.
Failure	Image size doesn't match	C603	The N-SET operation failed, and the print job is marked as failed.
Failure	Out of Resources	C605	The N-SET operation failed, and the print job is marked as failed.

#### 4.2.9.3.1.3.2.4 Specific Conformance for Printer SOP Class

PRINT-SCU never issues N-GET or N-EVENT-REPORT requests for the Printer SOP Class.

## 4.3 Network Interfaces

### 4.3.1 Physical Network Interface

The application is indifferent to the physical medium over which TCP/IP executes; which is dependent on the underlying operating system and hardware.

### 4.3.2 Additional Protocols

When host names rather than IP addresses are used in the configuration properties to specify presentation addresses for remote AEs, the application is dependent on the name resolution mechanism of the underlying operating system.

## 4.4 Configuration

Configuration is performed through the use of an administration tool. Refer to the product documentation for specific details.

#### 4.4.1 AE Title/Presentation Address Mapping

All SCU requests are performed using the “local” AE. Each AE has an alias assigned to allow a user to easily distinguish AEs from each other. Aliases are configurable, and are generally human-readable strings. Presentation addresses (IP address and Port) are also configurable for all AEs.

#### 4.4.2 Parameters

**Table 4-74 Configuration Parameters Table**

Parameter	Configurable	Default Value
<b>General Parameters</b>		
PDU Size	No	65kB
Time-out waiting for acceptance or rejection Response to an Association Open Request. (Application Level timeout)	No	60 seconds
General DIMSE level time-out values	No	60 seconds
Time-out waiting for response to TCP/IP connect() request. (Low-level timeout)	No	60 seconds
Time-out waiting for acceptance of a TCP/IP message over the network. (Low-level timeout)	No	60 seconds
Time-out for waiting for data between TCP/IP packets. (Low-level timeout)	No	60 seconds
Any changes to default TCP/IP settings, such as configurable stack parameters.	No	None
<b>AE Specific Parameters (all AEs)</b>		
Size constraint in maximum object size	No	None
Maximum PDU size the AE can receive	No	Unlimited
Maximum PDU size the AE can send	No	65kB
AE specific DIMSE level time-out values	No	60 seconds
Number of retries on failure (MOVE-SCU AE, STORE-SCU AE, PRINT-SCU AE only)	No	3 (MOVE-SCU AE), 5 (STORE-SCU AE and PRINT-SCU AE)
Number of simultaneous Associations by Service and/or SOP Class	No	Unlimited
SOP Class support	No	See Table 4-75
Transfer Syntax support	No	See Table 4-76
Supported DIMSE services	No	None
<b>AE Specific Parameters (FIND-SCP)</b>		
Matching responses	No	500

**Table 4-75 Default SOP Classes for Configured AEs**

SOP Class Name	SOP Class UID
CT Image Storage	1.2.840.10008.5.1.4.1.1.2
Secondary Capture Image Storage	1.2.840.10008.5.1.4.1.1.7
Multi-frame True Color Secondary Capture Image Storage	1.2.840.10008.5.1.4.1.1.7.4
Nuclear Medicine Image Storage	1.2.840.10008.5.1.4.1.1.20

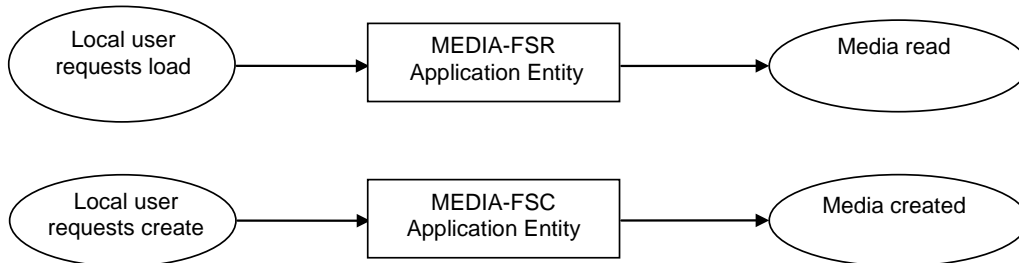
**Table 4-76 Default Transfer Syntaxes for Configured AEs**

<b>Transfer Syntax Name</b>	<b>Transfer Syntax UID</b>
Implicit VR Little Endian	1.2.840.10008.1.2
Explicit VR Little Endian	1.2.840.10008.1.2.1

## 5 MEDIA INTERCHANGE

### 5.1 Implementation Model

#### 5.1.1 Application Data Flow



**Figure 5.1 Implementation Model**

The application provides a user interface and media support as a File Set Reader. Conceptually it may be modeled as the following single AE:

- MEDIA-FSR, which loads a user-selected PS 3.10 compliant file, which may be a DICOMDIR or an instance object, either from the local file system or from PS 3.12 compliant media according to one of the General Purpose Media Application Profiles of PS 3.11 (CD-R or DVD-RAM)
- MEDIA-FSC, which generates PS 3.12 compliant media according to one of the General Purpose Media Application Profiles of PS 3.11 (CD-R or DVD-RAM), consisting of PS 3.10 compliant files and DICOMDIR

#### 5.1.2 Functional Definitions of AE's

##### 5.1.2.1 MEDIA-FSR

MEDIA-FSR is activated through the user interface to select datasets for display, or to import into the local database.

##### 5.1.2.2 MEDIA-FSC

MEDIA-FSC is activated through the user interface to select datasets for writing to the media.

#### 5.1.3 Sequencing of Real-World Activities

All FSR and FSC activities are sequentially initiated in the user interface, and another activity may not be initiated until the prior activity has completed.

## 5.2 AE Specifications

### 5.2.1 MEDIA-FSR

MEDIA-FSR provides standard conformance to the Media Storage Service Class.

**Table 5-1 Application Profiles, Activities and Roles for MEDIA-FSR**

<b>Application Profiles Supported</b>	<b>Real World Activity</b>	<b>Role</b>
STD-GEN-CD	Load dataset	FSR
STD-CTMR-CD	Load dataset	FSR
STD-CTMR-DVD	Load dataset	FSR
STD-GEN-DVD-JPEG	Load dataset	FSR
STD-GEN-DVD-J2K	Load dataset	FSR

**5.2.1.1 File Meta Information for the Application Entity**

Not applicable, since MEDIA-FSR is not an FSC or FSU.

**5.2.1.2 Real World Activities****5.2.1.2.1 Activity – Load Dataset**

MEDIA-FSR is activated through the user interface when a user selects the import or load operation. The import operation will cause the contents of the media to be imported into the local dataset. The load operation will cause the dataset to be loaded for display.

**5.2.1.2.1.1 Application Profile Specific Conformance**

There are no extensions or specializations.

**5.2.2 MEDIA-FSC**

MEDIA-FSC provides standard conformance to the Media Storage Service Class.

**Table 5-2 Application Profiles, Activities and Roles for MEDIA-FSC**

<b>Application Profiles Supported</b>	<b>Real World Activity</b>	<b>Role</b>
STD-GEN-CD	Create media	FSC
STD-CTMR-CD	Create media	FSC
STD-CTMR-DVD	Create media	FSC
STD-GEN-DVD-JPEG	Create media	FSC
STD-GEN-DVD-J2K	Create media	FSC

**5.2.2.1 File Meta Information for the Application Entity**

The Source Application Entity Title included in the File Meta Header is configurable.

**5.2.2.2 Real World Activities****5.2.2.2.1 Activity – Create Media**

MEDIA-FSC is activated through the user interface when a user selects the archive operation. This will cause the selected dataset to be created on the media.

**5.2.2.2.1.1 Application Profile Specific Conformance**

There are no extensions or specializations.

**5.3 Augmented and Private Application Profiles****5.3.1 Augmented Profiles**

None.

### 5.3.2 Private Profiles

None.

## 5.4 MEDIA Configuration

The usage of compression when creating media is configurable, and can be turned on or off. The specific compression Transfer Syntax to be used is also configurable, but must be one of the items in the following table:

**Table 5-3 Allowed Compression Transfer Syntaxes for FSC**

<b>Transfer Syntax Name</b>	<b>Transfer Syntax UID</b>
JPEG Lossless, Non-Hierarchical (Process 14)	1.2.840.10008.1.2.4.57
JPEG Lossless, Non-Hierarchical, First-Order Prediction	1.2.840.10008.1.2.4.70
JPEG 2000 Image Compression (Lossless Only)	1.2.840.10008.1.2.4.90
JPEG Baseline (Process 1)	1.2.840.10008.1.2.4.50
JPEG Extended (Process 2 &4)	1.2.840.10008.1.2.4.51
JPEG Spectral Selection, Non-Hierarchical (Process 6 & 8) (Retired)	1.2.840.10008.1.2.4.53
JPEG Full Progression, Non-Hierarchical (Process 10 & 12) (Retired)	1.2.840.10008.1.2.4.55
JPEG 2000 Image Compression	1.2.840.10008.1.2.4.91
RLE Lossless	1.2.840.10008.1.2.5



## **6 SUPPORT OF CHARACTER SETS**

Processing Workstation (Japanese release) supports the following character sets:

- ISO\_IR 100 (ISO 8859-1:1987 Latin Alphabet No. 1 supplementary set).
- ISO 2022 IR 87 (JIS X 0208-1990 Code for the Japanese Graphic Character set for information interchange)

No other character sets are supported.

## 7 SECURITY

### 7.1 Network

This product does not support any specific network security measures. It is assumed the software is used within a secured environment. It is assumed that a secured environment includes at a minimum:

- Firewall or router protections to ensure that only approved external hosts have network access to the software.
- Firewall or router protections to ensure that the software only has network access to approved external hosts and services.
- Any communication with external hosts and services outside the locally secured environment use appropriate secure network channels (e.g. such as a Virtual Private Network (VPN)).

Other network security procedures such as automated intrusion detection may be appropriate in some environments. Additional security features may be established by the local security policy and are beyond the scope of this conformance statement.

### 7.2 Basic Application Level Confidentiality Profile (De-Identification)

The application can remove patient identification from images during Media Storage reading. Partial de-identification can also be done by selecting Patient Editing vs Anonymization. Editing modifies only those DICOM tags which are selected by the user. The remainder of this section describes anonymization.

The de-identification (Anonymization) process maintains the study/series/image hierarchy of the original images, and any cross references that may exist between images.

The following table describes which DICOM tags are removed or available for modification during de-identification. All other tags (defined in DICOM 3.0 data dictionary) are left unchanged. Private tags are not maintained. The application removes, re-maps, nulls (empty value), or adjusts the required attributes as specified in DICOM PS 3.15 Table E.1-1. Additional attributes from the Patient Identification and Patient Demographic Modules are also removed based on common usage for identifying information.

Note: No change is made to the pixel data, therefore any burnt-in annotations which contain patient identification will remain. The application does not add or modify the Patient Identity Removed (0012,0062) attribute since it is impossible to determine whether or not the image pixel data has been de-identified.

**Table 7-1 Attributes Modified During De-identification**

<b>Attribute Name</b>	<b>Dicom Tag</b>	<b>De-identification Action</b>
Instance Creation Date	(0008,0012)	O
Instance Creation Time	(0008,0013)	O
Instance Creator UID	(0008,0014)	R
SOP Instance UID	(0008,0018)	M
Series Date	(0008,0021)	O
Instance Creation Date	(0008,0012)	O
Acquisition DateTime	(0008,002A)	O
Series Time	(0008,0031)	O
Accession Number	(0008,0050)	N, U
Institution Name	(0008,0080)	N
Institution Address	(0008,0081)	N
Referring Physician's Name	(0008,0090)	N
Referring Physician's Address	(0008,0092)	N
Referring Physician's Telephone Numbers	(0008,0094)	N
Station Name	(0008,1010)	N
Study Description	(0008,1030)	N
Series Description	(0008,103E)	N, U
Institutional Department Name	(0008,1040)	N, U
Physician(s) of Record	(0008,1048)	N
Performing Physicians' Name	(0008,1050)	N
Name of Physician(s) Reading Study	(0008,1060)	N
Operators' Name	(0008,1070)	N
Admitting Diagnoses Description	(0008,1080)	N
Additional Patient's History	(0010,21B0)	N
Responsible Person	(0010,2297)	R
Responsible Person Role	(0010,2298)	R
Responsible Organization	(0010,2299)	R
Patient Comments	(0010,4000)	N
Referenced SOP Instance UID	(0008,1155)	M
Derivation Description	(0008,2111)	N
Patient's Name	(0010,0010)	N, U
Patient ID	(0010,0020)	N, U
Patient's Birth Date	(0010,0030)	N, U
Patient's Birth Time	(0010,0032)	N
Patient's Sex	(0010,0040)	N
Patient's Primary Language Seq	(0010,0101)	R
Patients Insurance Plan Code Seq	(0010,0050)	R
Other Patient Ids	(0010,1000)	N

Other Patient Names	(0010,1001)	N
Other Patient IDs Sequence	(0010,1002)	R
Patient's Birth Name	(0010,1005)	R
Patient's Age	(0010,1010)	N
Patient's Size	(0010,1020)	N
Patient's Weight	(0010,1030)	N
Occupation	(0010,2180)	N
Ethnic Group	(0010,2160)	N
Patient's Address	(0010,1040)	R
Patient's Telephone Numbers	(0010,2154)	R
Medical Record Locator	(0010,1090)	N
Branch of Service	(0010,1081)	R
Military Rank	(0010,1080)	R
Patient's Mother's Birth Name	(0010,1060)	R
Device Serial Number	(0018,1000)	N
Protocol Name	(0018,1030)	N
Radiopharmaceutical Start DateTime	(0018,1078)	O
Radiopharmaceutical Stop DateTime	(0018,1079)	O
Frame Acquisition DateTime	(0018,9074)	O
Frame Reference DateTime	(0018,9151)	O
Content Date	(0008,0023)	O
Content Time	(0008,0033)	O
Start Acquisition DateTime	(0018,9516)	O
Stop Acquisition DateTime	(0018,9517)	O
Study Instance UID	(0020,000D)	M
Series Instance UID	(0020,000E)	M
Study ID	(0020,0010)	N
Frame of Reference UID	(0020,0052)	M
Synchronization Frame of Reference UID	(0020,0200)	M
Image Comments	(0020,4000)	N
Request Attributes Sequence	(0040,0275)	R
UID	(0040,A124)	M
Substance Administration DateTime	(0044,0010)	O
Creation Date	(2100,0040)	O
Referenced Frame of Reference UID	(3006,0024)	M
Related Frame of Reference UID	(3006,00C2)	M
Date of Secondary Capture	(0018,1012)	O
Time of Secondary Capture	(0018,0014)	O

In the de-identification action column, the following legend applies:

- N: the attribute is nulled, or set to an empty value.
- R: the attribute is removed entirely.

- M: the value is a DICOM UID that is remapped.
- U: the value is specified by the user.
- G: the value is generated.
- O: date or date/time offset by the difference between the original and modified Study Date.

During de-identification, no attributes are added, with the exception of those specified by the user, replacing the existing DICOM tab values. With the exception of UIDs, Study Date and the Date or Date/time attributes offset by the difference in Study Date (those marked with an O in Table 7-1), no attribute values are generated.

## 8 ANNEXES

### 8.1 IOD CONTENTS

The following sections specify the attributes used for the SOP Instances created by STORAGE-SCU. The following tables use a number of abbreviations. The abbreviations used in the "Presence of ..." column are:

VNAP	Value Not Always Present (attribute sent zero length if no value is present)
ANAP	Attribute Not Always Present
ALWAYS	Always Present
EMPTY	Attribute is sent without a value

The abbreviations used in the "Source" column:

MWL	the attribute value source is from Modality Worklist on NM Workstation
USER	the attribute value source is from User input on NM Workstation
SRC	the attribute value source is from the original SOP instance
AUTO	the attribute is automatically generated
MPPS	the attribute value is the same as that use for Modality Performed Procedure Step
CONFIG	the attribute value source is a configurable parameter

NOTE: All dates and times are encoded in the local configured calendar and time.

#### 8.1.1 CT Image SOP Instances

See PS 3.3 A.3.1

**Table 8-1 IOD of Created CT SOP Instances**

IE	Module	Reference	Presence of Module
Patient	Patient	8.1.4.1.1	ALWAYS
Study	General Study	8.1.4.1.3	ALWAYS
	Patient Study	8.1.4.1.2	ALWAYS
Series	General Series	8.1.4.1.5	ALWAYS
Frame of Reference	Frame of Reference	8.1.4.1.13	ALWAYS
Equipment	General Equipment	8.1.4.1.4	ALWAYS
Image	General Image	8.1.4.1.6	ALWAYS
	Image Plane	8.1.4.1.7	ALWAYS
	Image Pixel	8.1.4.1.8	ALWAYS
	Contrast/Bolus	8.1.4.1.9	Included if Contrast used in original images
	CT Image	8.1.4.3.1	ALWAYS
	SOP Common	8.1.4.1.12	ALWAYS
	Modality LUT	8.1.4.1.11	ALWAYS
	VOI LUT	8.1.4.1.10	ALWAYS

### 8.1.2 Secondary Capture SOP Instances

See PS 3.3 A.8.1

**Table 8-2 IOD of Created Secondary Capture SOP Instances**

IE	Module	Reference	Presence of Module
Patient	Patient	8.1.4.1.1	ALWAYS
Study	General Study	8.1.4.1.3	ALWAYS
Series	General Series	8.1.4.1.5	ALWAYS
Equipment	General Equipment	8.1.4.1.4	ALWAYS
	SC Equipment	8.1.4.2.1	ALWAYS
Image	General Image	8.1.4.1.6	ALWAYS
	Image Pixel	8.1.4.1.8	ALWAYS
	SC Image	8.1.4.2.2	ALWAYS
	SOP Common	8.1.4.1.12	ALWAYS

### 8.1.3 NM Image SOP Instances

See PS 3.3 A.5.1

**Table 8-3 IOD of Created NM SOP Instances**

IE	Module	Reference	Presence of Module
Patient	Patient	8.1.4.1.1	ALWAYS
Study	General Study	8.1.4.1.3	ALWAYS
	Patient Study	8.1.4.1.2	ALWAYS
Series	General Series	8.1.4.1.5	ALWAYS
	NM/PET Patient Orientation	8.1.4.4.1	ALWAYS
Equipment	General Equipment	8.1.4.1.4	ALWAYS
Image	General Image	8.1.4.1.6	ALWAYS
	Image Pixel	8.1.4.1.8	ALWAYS
	NM Image Pixel	8.1.4.4.2	ALWAYS
	Multi-frame	8.1.4.4.3	ALWAYS
	NM Multi-frame	8.1.4.4.4	ALWAYS
	NM Image	8.1.4.4.5	ALWAYS
	NM Isotope	8.1.4.4.6	ALWAYS
	NM Detector	8.1.4.4.7	ALWAYS
	NM TOMO Acquisition	8.1.4.4.8	Required if Image Type (0008,0008) Value 3 is TOMO, GATED TOMO.
	NM Multi-gated Acquisition	8.1.4.4.9	Required if Image Type (0008,0008) Value 3 is GATED, GATED TOMO.
	NM Phase	8.1.4.4.10	Required if Image Type (0008,0008) Value 3 is DYNAMIC.
	General Anatomy Optional	8.1.4.4.11	ALWAYS
VOI LUT	8.1.4.1.10	ALWAYS	

	SOP Common	8.1.4.1.12	ALWAYS
	Private Application	8.1.4.4.12	Only if private data are present



## 8.1.4 Modules

### 8.1.4.1 Common Modules

#### 8.1.4.1.1 Patient Module

See DICOM PS 3.3 C.7.1.1 for more information.

**Table 8-4 Patient Module of Created SOP Instances**

Attribute Name	Tag	VR	Value	Presence of Value	Source
Patient's Name	(0010,0010)	PN	From Modality Worklist or user input. Values supplied via Modality Worklist will be entered as received. Maximum 64 characters.	VNAP	MWL/USER
Patient ID	(0010,0020)	LO	From Modality Worklist or user input. Maximum 64 characters.	VNAP	MWL/USER
Patient's Birth Date	(0010,0030)	DA	From Modality Worklist or user input	VNAP	MWL/USER
Patient's Sex	(0010,0040)	CS	From Modality Worklist or user input	VNAP	MWL/USER
Patient Comments	(0010,4000)	LT	From User Input. Maximum 1024 characters.	ANAP	USER

#### 8.1.4.1.2 Patient Study Module

See DICOM PS 3.3 C.7.2.2 for more information.

**Table 8-5 Patient Study Module of Created SOP Instances**

Attribute Name	Tag	VR	Value	Presence of Value	Source
Admitting Diagnosis Description	(0008,1080)	LO	Set to NULL	EMPTY	AUTO
Patient's Age	(0010,1010)	AS	Calculated from DoB input on base of actual Date	ALWAYS	AUTO
Patient's Size	(0010,1020)	DS	From Modality Worklist or user input	VNAP	MWL/USER
Patient's Weight	(0010,1030)	DS	From Modality Worklist or user input	VNAP	MWL/USER

#### 8.1.4.1.3 General Study Module

See DICOM PS 3.3 C.7.2.1 for more information.

**Table 8-6 General Study Module of Created SOP Instances**

Attribute Name	Tag	VR	Value	Presence of Value	Source
Study Instance UID	(0020,000D)	UI	From Modality Worklist or generated by device	ALWAYS	MWL/AUTO
Study Date	(0008,0020)	DA	<yyyymmdd>	ALWAYS	AUTO
Study Time	(0008,0030)	TM	<hhmmss.frac>	ALWAYS	AUTO
Referring Physician's Name	(0008,0090)	PN	From Modality Worklist or User Input	VNAP	MWL/USER
Study ID	(0020,0010)	SH	Requested Procedure ID from Worklist or generated by device	VNAP	MWL/AUTO

Accession Number	(0008,0050)	SH	From Modality Worklist or user input	VNAP	MWL/USER
Study Description	(0008,1030)	LO	Comment text box in study list.	VNAP	USER
Physician(s) of Record	(0008,1048)	PN	Set to NULL	ANAP	AUTO
Name of Physician(s) Reading Study	(0008,1060)	PN	Set to NULL	ANAP	AUTO

#### 8.1.4.1.4 General Equipment Module

See DICOM PS 3.3 C.7.5.1

**Table 8-7 General Equipment Module of Created SOP Instances**

Attribute Name	Tag	VR	Value	Presence of Value	Source
Manufacturer	(0008,0070)	LO	"TOSHIBA_MEC"	ALWAYS	AUTO
Institution Name	(0008,0080)	LO	From Configuration	ANAP	CONFIG
Station Name	(0008,1010)	SH	From Configuration	ANAP	CONFIG
Institution Department Name	(0008,1040)	LO	From Configuration	ANAP	CONFIG
Manufacturer's Model Name	(0008,1090)	LO	"GCA9300R"	ANAP	AUTO
Device Serial Number	(0018,1000)	LO	From Configuration	ANAP	CONFIG
Software Version	(0018,1020)	LO	V1.00JR000	ANAP	CONFIG
Date of Last Calibration	(0018,1200)	DA	Taken from system last calibration	ANAP	AUTO
Time of Last Calibration	(0018,1201)	TM	Taken from system last calibration	ANAP	AUTO

#### 8.1.4.1.5 General Series Module

See DICOM PS 3.3 C.7.3.1

**Table 8-8 General Series Module of Created SOP Instances**

Attribute Name	Tag	VR	Value	Presence of Value	Source
Modality	(0008,0060)	CS	"NM"	ALWAYS	AUTO
Series Instance UID	(0020,000E)	UI	Generated by device	ALWAYS	AUTO
Series Number	(0020,0011)	IS	Generated by device	ALWAYS	AUTO
Series Date	(0008,0021)	DA	<yyyymmdd>	ANAP	AUTO
Series Time	(0008,0031)	TM	<hhmmss.frac>	ANAP	AUTO
Performing Physician's Name	(0008,1050)	PN	From Modality Worklist or User Input	ANAP	MWL/USER
Protocol Name	(0018,1030)	LO	Taken from acquisition	ANAP	USER
Series Description	(0008,103E)	LO	user input	VNAP	USER
Operator's Name	(0008,1070)	PN	From Modality Worklist or User Input	ANAP	MWL/USER
Patient Position	(0018,5100)	CS	Taken from acquisition	ANAP	AUTO

Largest Pixel Value in Series	(0028,0109)	CS	Taken from acquisition	ANAP	AUTO
-------------------------------	-------------	----	------------------------	------	------

#### 8.1.4.1.6 General Image Module

See DICOM PS 3.3 C.7.6.1

**Table 8-9 General Image Module of Created SOP Instances**

Attribute Name	Tag	VR	Value	Presence of Value	Source
Instance Number	(0020,0013)	IS	Generated by device	ALWAYS	AUTO
Content Date	(0008,0023)	DA	Generated by device	ALWAYS	AUTO
Content Time	(0008,0033)	TM	Generated by device	ALWAYS	AUTO
Image Type	(0008,0008)	CS	Generated by device	ALWAYS	AUTO
Acquisition Date	(0008,0022)	DA	Generated by device	ALWAYS	AUTO
Acquisition Time	(0008,0032)	TM	Generated by device	ALWAYS	AUTO
Image Comments	(0020,4000)	LT	Set to NULL	ANAP	AUTO
Patient Orientation	(0020,0020)	CS	Set to NULL	EMPTY	AUTO

NOTE: All dates and times are encoded in the local configured calendar and time.

#### 8.1.4.1.7 Image Plane Module

See DICOM PS 3.3 C.7.6.2

**Table 8-10 Image Plane Module of Created SOP Instances**

Attribute Name	Tag	VR	Value	Presence of Value	Source
Slice Thickness	(0018,0050)	DS	Automatically Generated	ALWAYS	AUTO
Image Orientation (Patient)	(0020,0032)	DS	Automatically Generated	ALWAYS	AUTO
Image Position (Patient)	(0020,0037)	DS	Automatically Generated	ALWAYS	AUTO
Pixel Spacing	(0028,0030)	DS	Automatically Generated	ALWAYS	AUTO

#### 8.1.4.1.8 Image Pixel Module

See DICOM PS 3.3 C.7.6.3

**Table 8-11 Image Pixel Module of Created SOP Instances**

Attribute Name	Tag	VR	Value	Presence of Value	Source
Sample per Pixel	(0028,0002)	US	1 or 3(SC)	ALWAYS	AUTO
Photometric interpretation	(0020,0004)	CS	"MONOCHROME2" or "RGB"(SC)	ALWAYS	AUTO
Rows	(0020,0010)	US	Taken from acquisition matrix	ALWAYS	AUTO
Columns	(0028,0011)	US	Taken from acquisition matrix	ALWAYS	AUTO
Bits Allocated	(0028,0100)	US	16	ALWAYS	AUTO
Bits Stored	(0028,0101)	US	16	ALWAYS	AUTO
High Bit	(0028,0102)	US	15	ALWAYS	AUTO

Pixel Representation	(0028,0103)	US	0	ALWAYS	AUTO
Smallest Image Pixel Value	(0028,0106)	US	Generated by device	ANAP	AUTO
Largest Image Pixel Value	(0028,0107)	US	Generated by device	ANAP	AUTO
Planar Configuration	(0028,0006)	US	0	ANAP	AUTO
Pixel Data	(7FE0,0010)	OW	Generated by device	ALWAYS	AUTO

#### 8.1.4.1.9 Contrast/Bolus Module

See DICOM PS 3.3 C.7.6.4

**Table 8-12 Contrast/Bolus Module of Created SOP Instances**

Attribute Name	Tag	VR	Value	Presence of Value	Source
Contrast/Bolus Agent	(0018,0010)	LO	From source images	ANAP	SRC

#### 8.1.4.1.10 VOI LUT Module

See DICOM PS 3.3 C.11.2

**Table 8-13 VOI LUT Module of Created SOP Instances**

Attribute Name	Tag	VR	Value	Presence of Value	Source
Window Center	(0028,1050)	DS	Generation by device	ANAP	AUTO
Window Width	(0028,1051)	DS	Generation by device	ANAP	AUTO

#### 8.1.4.1.11 Modality LUT Module

See DICOM PS 3.3 C.11.1

**Table 8-14 Modality LUT Module of Created SOP Instances**

Attribute Name	Tag	VR	Value	Presence of Value	Source
Rescale Intercept	(0028,1052)	DS	Automatically Generated	ANAP	AUTO
Rescale Slope	(0028,1053)	DS	Automatically Generated	ANAP	AUTO
Rescale Type	(0028,1054)	LO	US	ANAP	AUTO

#### 8.1.4.1.12 SOP Common Module

See DICOM PS 3.3 C.12.1

**Table 8-15 SOP Common Module of Created SOP Instances**

Attribute Name	Tag	VR	Value	Presence of Value	Source
Specific Character set	(0008,0005)	CS	Refer to Section 6	ANAP	AUTO
SOP Class UID	(0008,0016)	UI	Generated by device	ALWAYS	AUTO
SOP Instance UID	(0008,0018)	UI	Generated by device	ALWAYS	AUTO

**8.1.4.1.13 Frame of Reference Module**

See DICOM PS 3.3 C.7.4.1

**Table 8-16 Frame of Reference Module of Created SOP Instances**

<b>Attribute Name</b>	<b>Tag</b>	<b>VR</b>	<b>Value</b>	<b>Presence of Value</b>	<b>Source</b>
Frame of Reference UID	(0020,0052)	UI	From source images	ALWAYS	SRC
Position Reference Indicator	(0020,1040)	LO	From source images	VNAP	SRC

## 8.1.4.2 Secondary Capture Image Module

## 8.1.4.2.1 Secondary Capture Equipment Module

See DICOM PS 3.3 C.8.6.1

**Table 8-17 Secondary Capture Equipment Module of Created SOP Instances**

Attribute Name	Tag	VR	Value	Presence of Value	Source
Conversion Type	(0008,0064)	CS	Generated by device	ALWAYS	AUTO

## 8.1.4.2.2 Secondary Capture Image Module

See DICOM PS 3.3 C.8.6.2

**Table 8-18 Secondary Capture Image Module of Created SOP Instances**

Attribute Name	Tag	VR	Value	Presence of Value	Source
Date of Secondary Capture	(0018,1012)	DA	Generated by device	ALWAYS	AUTO
Time of Secondary Capture	(0018,1014)	TM	Generated by device	ALWAYS	AUTO

NOTE: All dates and times are encoded in the local configured calendar and time.

## 8.1.4.3 CT Image Modules

## 8.1.4.3.1 CT Image Module

See DICOM PS 3.3 C.8.2.1

**Table 8-19 CT Image Module of Created SOP Instances**

Attribute Name	Tag	VR	Value	Presence of Value	Source
KVP	(0018,0060)	DS	From source images	VNAP	SRC
Data Collection Diameter	(0018,0090)	DS	From source images	ANAP	SRC
Reconstruction Diameter	(0018,1100)	DS	From source images	ANAP	SRC
Gantry/Detector Tilt	(0018,1120)	DS	From source images	ANAP	SRC
Table Height	(0018,1130)	DS	From source images	ANAP	SRC
Rotation Direction	(0018,1140)	CS	From source images	ANAP	SRC
Exposure Time	(0018,1150)	IS	From source images	ANAP	SRC
X-Ray Tube Current	(0018,1151)	IS	From source images	ANAP	SRC
Exposure	(0018,1152)	IS	From source images	ANAP	SRC
Filter Type	(0018,1160)	SH	From source images	ANAP	SRC
Generator Power	(0018,1170)	IS	From source images	ANAP	SRC
Convolution Kernel	(0018,1210)	SH	From source images	ANAP	SRC
Acquisition Number	(0020,0012)	IS	From source images	VNAP	SRC

## 8.1.4.4 NM Image Modules

## 8.1.4.4.1 NM/PET Patient Orientation Module

Table 8-20 NM/PET Patient Orientation Module of Created SOP Instances

Attribute Name	Tag	VR	Value	Presence of Value	Source
Patient Orientation Code	(0054,0410)	SQ	Zero or one item shall be included in this sequence.	VNAP	AUTO
>Code Value	(0008,0100)	SH	Baseline CID 19.	VNAP	AUTO
>Coding Scheme Designator	(0008,0102)	SH	"99SDM"	VNAP	AUTO
>Code Meaning	(0008,0104)	LO	Baseline CID 19.	VNAP	AUTO
>Patient Orientation Modifier Code	(0054,0412)	SQ	Zero or one item shall be included in this sequence.	VNAP	AUTO
>>Code Value	(0008,0100)	SH	Baseline CID 20.	VNAP	AUTO
>>Coding Scheme Designator	(0008,0102)	SH	"99SDM"	VNAP	AUTO
>>Code Meaning	(0008,0104)	LO	Baseline CID 20.	VNAP	AUTO
Patient Gantry Relationship Code	(0054,0414)	SQ	Zero or one item shall be included in this sequence.	VNAP	AUTO
>Code Value	(0008,0100)	SH	Baseline CID 21.	VNAP	AUTO
>Coding Scheme Designator	(0008,0102)	SH	"99SDM"	VNAP	AUTO
>Code Meaning	(0008,0104)	LO	Baseline CID 21.	VNAP	AUTO

## 8.1.4.4.2 NM Image Pixel module

Table 8-21 NM Image Pixel module of Created SOP Instances

Attribute Name	Tag	VR	Value	Presence of Value	Source
Sample per Pixel	(0028,0002)	US	1	ALWAYS	AUTO
Photometric interpretation	(0020,0004)	CS	"MONOCHROME2"	ALWAYS	AUTO
Bits Allocated	(0028,0100)	US	16	ALWAYS	AUTO
Bits Stored	(0028,0101)	US	16	ALWAYS	AUTO
High Bit	(0028,0102)	US	15	ALWAYS	AUTO
Pixel Spacing	(0028,0030)	DS	Generated by device	ALWAYS	AUTO
Slice Thickness	(0018,0050)	DS	Generated by device	ANAP	AUTO

## 8.1.4.4.3 Multi-Frame module

Table 8-22 Multi-Frame module of Created SOP Instances

Attribute Name	Tag	VR	Value	Presence of Value	Source
Number of Frames	(0028,0008)	IS	Taken from acquisition	ALWAYS	AUTO
Frame Increment Pointer	(0028,0009)	AT	Generated by device	ALWAYS	AUTO

## 8.1.4.4.4 NM Multi-Frame module

Table 8-23 NM Multi-Frame module of Created SOP Instances

Attribute Name	Tag	VR	Value	Presence of Value	Source
Frame Increment Pointer	(0028,0009)	AT	Generated by device	ALWAYS	AUTO
Energy Window Vector	(0054,0010)	US	Generated by device	ALWAYS	AUTO
Number of Energy Windows	(0054,0011)	US	Taken from acquisition	ALWAYS	AUTO
Detector Vector	(0054,0020)	US	Generated by device	ALWAYS	AUTO
Number of Detectors	(0054,0021)	US	Taken from acquisition	ALWAYS	AUTO
Phase Vector	(0054,0030)	US	Generated by device	ANAP	AUTO
Number of Phases	(0054,0031)	US	Taken from acquisition	ANAP	AUTO
Rotation Vector	(0054,0050)	US	Generated by device	ANAP	AUTO
Number of Rotations	(0054,0051)	US	Taken from acquisition	ANAP	AUTO
R-R Interval Vector	(0054,0060)	US	Generated by device	ANAP	AUTO
Number of R-R Intervals	(0054,0061)	US	Taken from acquisition	ANAP	AUTO
Time Slot Vector	(0054,0070)	US	Generated by device	ANAP	AUTO
Number of Time Slots	(0054,0071)	US	Taken from acquisition	ANAP	AUTO
Angular View Vector	(0054,0090)	US	Generated by device	ANAP	AUTO
Time Slice Vector	(0054,0100)	US	Generated by device	ANAP	AUTO

## 8.1.4.4.5 NM Image module

Table 8-24 NM Image module of Created SOP Instances

Attribute Name	Tag	VR	Value	Presence of Value	Source
Image Type	(0008,0008)	CS	"ORIGINAL\PRIMARY\[VALUE3]", Where "VALUE3" is one of STATIC,DYNAMIC,GATED,TOM O,GATED TOMO.	ALWAYS	AUTO
Counts Accumulated	(0018,0070)	IS	Taken from acquisition	VNAP	USER
Acquisition Termination Condition	(0018,0071)	CS	"CTNS","MANU","TIME","TRIG"	ALWAYS	USER
Actual Frame Duration	(0018,1242)	IS	Taken from acquisition	VNAP	AUTO
Corrected Image	(0028,0051)	CS	"UNIF"	ALWAYS	AUTO

## 8.1.4.4.6 NM Isotope module

Table 8-25 NM Isotope module of Created SOP Instances

Attribute Name	Tag	VR	Value	Presence of Value	Source
Image Type	(0008,0008)	CS	"ORIGINAL\PRIMARY\[VALUE3]", Where "VALUE3" is one of STATIC,DYNAMIC,GATED,TOM O,GATED TOMO.	ALWAYS	AUTO



Energy Window Information	(0054,0012)	SQ	Zero or one item shall be included in this sequence.	VNAP	AUTO
>Energy Window Name	(0054,0018)	SH	Taken from acquisition	ALWAYS	AUTO
>Energy Window Range	(0054,0013)	SQ	Zero or one item shall be included in this sequence.	VNAP	AUTO
>>Energy Window Lower Limit	(0054,0014)	DS	Taken from acquisition	ALWAYS	USER
>>Energy Window Upper Limit	(0054,0015)	DS	Taken from acquisition	ALWAYS	USER
Radiopharmaceutical Information	(0054,0016)	SQ	Zero or one item shall be included in this sequence.	VNAP	AUTO
>Radiopharmaceutical	(0018,0031)	LO	Taken from acquisition	VNAP	USER
>Radionuclide Total Dose	(0018,1074)	DS	Taken from acquisition	VNAP	USER
> Radionuclide Code	(0054,0300)	SQ	Zero or one item shall be included in this sequence.	VNAP	AUTO
>>Code Value	(0008,0100)	SH	Baseline CID 25.	VNAP	AUTO
>>Coding Scheme Designator	(0008,0102)	SH	"99SDM"	VNAP	AUTO
>>Code Meaning	(0008,0104)	LO	Baseline CID 25.	VNAP	AUTO
Intervention Drug Information	(0018,0026)	SQ	Zero or one item shall be included in this sequence.	VNAP	AUTO
>Intervention Drug Name	(0018,0034)	LO	Taken from acquisition	VNAP	USER
>Intervention Drug Start Time	(0018,0035)	TM	Taken from acquisition	VNAP	USER
> Intervention Drug Dose	(0018,0028)	DS	Taken from acquisition	VNAP	USER

## 8.1.4.4.7 NM Detector module

Table 8-26 NM Detector module of Created SOP Instances

Attribute Name	Tag	VR	Value	Presence of Value	Source
Detector Information	(0054,0022)	SQ	Zero or one item shall be included in this sequence.	VNAP	AUTO
>Collimator/Grid Name	(0018,1180)	SH	Taken from gantry	ALWAYS	AUTO
>Collimator Type	(0018,1181)	CS	"PARA","FANB"	ALWAYS	AUTO
>Field of View Shape	(0018,1147)	CS	"RECTANGLE"	ALWAYS	AUTO
>Field of View Dimension(s)	(0018,1149)	IS	Generated by device	ALWAYS	AUTO
>Focal Distance	(0018,1182)	IS	"0"	ALWAYS	AUTO
>X Focus Center	(0018,1183)	DS	"0"	ALWAYS	AUTO
>Y Focus Center	(0018,1184)	DS	"0"	ALWAYS	AUTO
>Zoom Factor	(0028,0031)	DS	Taken from acquisition	ALWAYS	USER
>Center of Rotation Offset	(0018,1145)	DS	0	ALWAYS	AUTO

>Start Angle	(0054,0200)	DS	Generated by device	ALWAYS	USER
>Radial Position	(0018,1142)	DS	Taken from gantry	ALWAYS	USER
>Image Orientation (Patient)	(0020,0037)	DS	Generated by device	VNAP	AUTO
>Image Position (Patient)	(0020,0032)	DS	Generated by device	VNAP	AUTO
>View Code	(0054,0220)	SQ	Zero or one item shall be included in this sequence.	ANAP	AUTO
>>Code Value	(0008,0100)	SH	user input.	ANAP	USER
>>Coding Scheme Designator	(0008,0102)	SH	"99SDM"	ANAP	AUTO
>>Code Meaning	(0008,0104)	LO	user input.	ANAP	USER

## 8.1.4.4.8 NM Tomo Acquisition module

Table 8-27 NM Tomo Acquisition module of Created SOP Instances

Attribute Name	Tag	VR	Value	Presence of Value	Source
Rotation Information	(0054,0052)	SQ	Zero or one item shall be included in this sequence.	VNAP	AUTO
>Start Angle	(0054,0200)	DS	Generated by device	ALWAYS	USER
>Angular Step	(0018,1144)	DS	Taken from acquisition	ALWAYS	USER
>Rotation Direction	(0018,1140)	CS	"CW","CCW"	ALWAYS	USER
>Scan Arc	(0018,1143)	DS	120,180,360	ALWAYS	USER
>Actual Frame Duration	(0018,1242)	IS	Taken from acquisition	ALWAYS	AUTO/ USER
>Radial Position	(0018,1142)	DS	Taken from gantry	ALWAYS	USER
>Number of Frame in Rotation	(0054,0053)	US	Taken from acquisition	ALWAYS	USER
>Table Traverse	(0018,1131)	DS	Taken from gantry	ALWAYS	USER
Type of Detector Motion	(0054,0202)	CS	"STEP AND SHOOT", "CONTINUOUS"	ALWAYS	USER

## 8.1.4.4.9 NM Multi-Gated Acquisition module

Table 8-28 NM Multi-Gated Acquisition module of Created SOP Instances

Attribute Name	Tag	VR	Value	Presence of Value	Source
Beat Rejection Flag	(0018,1080)	CS	Y or N	ALWAYS	USER
Skip Beats	(0018,1086)	IS	1	ALWAYS	AUTO
Heart Rate	(0018,1088)	IS	Taken from acquisition	ALWAYS	AUTO
Gated Information Sequence	(0054,0062)	SQ	Zero or one item shall be included in this sequence.	VNAP	AUTO
>Trigger Timer	(0018,1060)	DS	0	ALWAYS	AUTO
>Cardiac Framing Type	(0018,1064)	LO	FORWARD FORWARD/BACKWARD	or ALWAYS	AUTO

>Data Information	(0054,0063)	SQ	Zero or one item shall be included in this sequence.	VNAP	AUTO
>>Frame Time	(0018,1063)	DS	Taken from acquisition	ALWAYS	AUTO
>>Nominal Interval	(0018,1062)	IS	Taken from acquisition	ALWAYS	AUTO
>>Low R-R Value	(0018,1081)	IS	Taken from acquisition	ALWAYS	AUTO
>>High R-R Value	(0018,1082)	IS	Taken from acquisition	ALWAYS	AUTO
>>Intervals Acquired	(0018,1183)	IS	Taken from acquisition	ALWAYS	AUTO
>>Intervals Rejected	(0018,1184)	IS	Taken from acquisition	ALWAYS	AUTO
>>Time Slot Information	(0054,0072)	SQ	Zero or one item shall be included in this sequence.	VNAP	AUTO
>>>Time Slot Time	(0054,0073)	DS	Generation by device	ALWAYS	AUTO

## 8.1.4.4.10 NM Phase Acquisition module

Table 8-29 NM Phase Acquisition module of Created SOP Instances

Attribute Name	Tag	VR	Value	Presence of Value	Source
Phase Information	(0054,0032)	CS	Generation by device	ALWAYS	AUTO
>Phase Delay	(0054,0036)	IS	0	ALWAYS	AUTO
>Actual Frame Duration	(0018,1242)	IS	Taken from acquisition	ALWAYS	USER
>Phase Between Frames	(0054,0038)	IS	0	ALWAYS	AUTO
>Number of Frame in Phase	(0054,0033)	US	Taken from acquisition	ALWAYS	USER

## 8.1.4.4.11 General Anatomy Optional module

Table 8-30 General Anatomy Optional module of Created SOP Instances

Attribute Name	Tag	VR	Value	Presence of Value	Source
Anatomic region	(0008,2218)	SQ	Zero or one item shall be included in this sequence.	VNAP	AUTO
>Code Value	(0008,0100)	SH	Baseline CID 7304.	VNAP	AUTO
>Coding Scheme Designator	(0008,0102)	SH	"99SDM"	VNAP	AUTO
>Code Meaning	(0008,0104)	LO	Baseline CID 7304.	VNAP	AUTO

## 8.1.4.4.12 Private Application Module

Table 8-31 Private Application Module of Created NM Image SOP Instances

Attribute Name	Tag	VR	Value	Presence of Value	Source
Private Creator Code	(7011,00xx)	LO	"TOSHIBA_MEC_NM3A"	ANAP	AUTO
Number of Phases	(7011,xx01)	SS	Taken from dynamic tomo acquisition	ANAP	USER

Number of Repeats per Phases	(7011,xx02)	SS	Taken from dynamic tomo acquisition	ANAP	USER
Number of Cycles per Repeat	(7011,xx03)	SS	Taken from dynamic tomo acquisition	ANAP	USER
Cycle Start Time	(7011,xx04)	SL	Taken from dynamic tomo acquisition	ANAP	AUTO
Cycle End Time	(7011,xx05)	SL	Taken from dynamic tomo acquisition	ANAP	AUTO
Effective Repeat Acquisition Time	(7011,xx06)	SL	Taken from dynamic tomo acquisition	ANAP	AUTO
OM Line Angle	(7011,xx07)	SL	Taken from gantry in cerebral tomo and dynamic tomo acquisition (NULL if not cerebral)	ANAP	USER
Collimator Name	(7011,xx08)	CS	Taken from gantry	ANAP	AUTO
Collimator Type	(7011,xx09)	CS	Taken from gantry	ANAP	AUTO
Field of View Dimensions	(7011,xx0A)	IS	Taken from acquisition	ANAP	AUTO
Focal Distance	(7011,xx0B)	IS	0	ANAP	AUTO
X Focus Center	(7011,xx0C)	DS	0	ANAP	AUTO
Y Focus Center	(7011,xx0D)	DS	0	ANAP	AUTO
Start Angle	(7011,xx0E)	DS	Generated by device	ANAP	USER
Acquisition Type	(7011,xx0F)	LO	Taken from acquisition protocol	ANAP	USER
OM Line Position	(7011,xx10)	SL	Taken from gantry in tomo and dynamic tomo acquisition	ANAP	AUTO
Useful Field of View	(7011,xx11)	SS	Generated by device	ANAP	AUTO
Energy Window Type	(7011,xx20)	LO	Taken from acquisition	ANAP	USER
Preset Name used for Acquisition	(7011,xx21)	LO	Taken from acquisition	ANAP	USER
Phase Number	(7011,xx50)	SS	Generated by device	ANAP	USER
Repeat Number	(7011,xx51)	SS	Generated by device	ANAP	USER
Cursor Information of Reconstruction	(7011,xx53)	DS	Generated by device	ANAP	USER
Application parameter	(7011,xx60)	LO	Generated by device	ANAP	USER
CBF parameter	(7011,xx61)	LO	Generated by device	ANAP	USER
NLD Filter parameter	(7011,xx62)	LO	Generated by device	ANAP	USER
TEW parameter	(7011,xx63)	LO	Generated by device	ANAP	USER
Fanpara parameter	(7011,xx64)	LO	Generated by device	ANAP	USER
Energy Separate parameter	(7011,xx65)	LO	Generated by device	ANAP	USER
SPECT Editor parameter	(7011,xx66)	LO	Generated by device	ANAP	USER
SSPAC parameter	(7011,xx67)	LO	Generated by device	ANAP	USER
IMP-ARG parameter	(7011,xx68)	LO	Generated by device	ANAP	USER
Recon parameter	(7011,xx69)	LO	Generated by device	ANAP	USER

## 8.2 Data Dictionary of Private Attributes

Table 8-32 Private Attributes

Tag	Attribute Name	VR	VM
(7011,00xx)	Private Creator Code	LO	1
(7011,xx01)	Number of Phases	SS	1-n
(7011,xx02)	Number of Repeats per Phases	SS	1-n
(7011,xx03)	Number of Cycles per Repeat	SS	1-n
(7011,xx04)	Cycle Start Time	SL	1-n
(7011,xx05)	Cycle End Time	SL	1-n
(7011,xx06)	Effective Repeat Acquisition Time	SL	1-n
(7011,xx07)	OM Line Angle	SL	1
(7011,xx08)	Collimator Name	CS	1-n
(7011,xx09)	Collimator Type	CS	1-n
(7011,xx0A)	Field of View Dimensions	IS	1-n
(7011,xx0B)	Focal Distance	IS	1-n
(7011,xx0C)	X Focus Center	DS	1-n
(7011,xx0D)	Y Focus Center	DS	1-n
(7011,xx0E)	Start Angle	DS	1-n
(7011,xx0F)	Acquisition Type	LO	1
(7011,xx10)	OM Line Position	SL	1
(7011,xx11)	Useful Field of View	SS	2-n
(7011,xx20)	Energy Window Type	LO	1-n
(7011,xx21)	Preset Name used for Acquisition	LO	1
(7011,xx50)	Phase Number	SS	1
(7011,xx51)	Repeat Number	SS	1
(7011,xx53)	Cursor Information of Reconstruction	DS	1-n
(7011,xx60)	Application parameter	LO	1-n
(7011,xx61)	CBF parameter	LO	1-n
(7011,xx62)	NLD Filter parameter	LO	1-n
(7011,xx63)	TEW parameter	LO	1-n
(7011,xx64)	Fanpara parameter	LO	1-n
(7011,xx65)	Energy Separate parameter	LO	1-n
(7011,xx66)	SPECT Editor parameter	LO	1-n
(7011,xx67)	SSPAC parameter	LO	1-n
(7011,xx68)	IMP-ARG parameter	LO	1-n
(7011,xx69)	Recon parameter	LO	1-n