

CONFORMANCE STATEMENT
FOR NUCLEAR MEDICINE EQUIPMENT
GCA SOFTWARE
FOR
DICOM TRANSFER SOFTWARE
(STORAGE SCU)
MODEL NSDC-055A
(MIINM0008EA)

TOSHIBA CORPORATION

IMPORTANT!

1. No part of this manual may be copied or reprinted, in whole or in part, without written permission.
2. The contents of this manual are subject to change without prior notice and without our legal obligation.

Table of Contents

1.	Introduction	1
1.1	References.....	1
1.2	Definitions	1
1.3	Acronyms, Abbreviations and Symbols.....	2
1.4	Important Note to the Reader	3
2.	Implementation Model.....	4
2.1	Application Data Flow Diagram.....	4
2.2	Functional Definitions of AE's.....	4
2.2.1	Export AE	4
2.2.2	Import AE	5
2.3	Sequencing of Real World Activities	5
2.3.1	Features.....	5
2.3.2	Operation	5
3.	AE Specifications	6
3.1	Export Specification	6
3.1.1	Export Association Establishment Policies.....	6
3.1.2	Export Association Initiation by Real-World Activity	7
3.1.3	Export Association Acceptance Policy	8
3.2	Import Specification	9
3.2.1	Import Association Establishment Policies	9
3.2.2	Import Association Initiation by Real-World Activity	9
3.2.3	Import Association Acceptance Policy.....	10
4.	Communication Profiles	12
4.1	Supported Communication Stacks.....	12
4.2	OSI Stack	12
4.3	TCP/IP Stack.....	12

4.3.1	API	12
4.3.2	Physical media support.....	12
4.4	Point-to-Point Stack	12
5.	Extensions/Specializations/Privatizations	13
5.1	Standard/Specializations/Private SOPs	13
5.1.1	Standard Extended/Specialized/Private SOP - NM Image Storage.....	13
6.	Configuration	14
6.1	AE Title/Presentation Address Mapping	14
6.2	Configurable Parameters	14
6.2.1	Time-out value, retry count, retry interval.....	14
6.2.2	Warning status criteria	15
6.3	Implementation Information and Maximum Reception PDU Size.....	16
6.4	Default Transfer Syntax	16
6.4.1	Export AE.....	16
7.	Support of Extended Character Sets	17
8.	Information Object Definition-Storage SCU	18
8.1	Entity Module Definitions.....	18
8.1.1	NM IOD Modules	18
8.2	Information Object Definitions	20
8.2.1	Patient Module	20
8.2.2	General Study Module	20
8.2.3	Patient Study Module.....	20
8.2.4	General Series Module	21
8.2.5	NM Series Module	22
8.2.6	General Equipment Module	23
8.2.7	General Image Module	23
8.2.8	Image Pixel Module	24

8.2.9	NM Image Pixel Module.....	25
8.2.10	Multi-frame Module	25
8.2.11	NM Multi-frame Module.....	26
8.2.12	NM Image Module.....	27
8.2.13	NM Isotope Module	28
8.2.14	NM Detector Module	28
8.2.15	NM TOMO Acquisition Module	29
8.2.16	NM Multi-gated Acquisition Module	29
8.2.17	NM Phase Module.....	30
8.2.18	NM Reconstruction Module.....	30
8.2.19	SOP Common Module	30
8.3	Private Data Elements	32

1. Introduction

This document is a DICOM Conformance Statement for Toshiba's Nuclear Medicine System (hereafter referred to as "the NM System"), and the applicable models covered by this document are described in Table 3 and Table 8. It is intended to provide the reader with the knowledge of how to integrate this product within a DICOM compliant hospital network. It details the DICOM Service Classes, Information Objects, and Communication Protocols that are supported by this product.

If the reader is unfamiliar with DICOM, it is recommended that he/she read the DICOM Specification (referenced below) prior to reading this conformance statement. Also note that this document is formatted according to the DICOM Specification, Part 2: Conformance.

1.1 References

ACR-NEMA Digital Imaging and Communications in Medicine, DICOM V3.0.

1.2 Definitions

- **Association Establishment** - An Association Establishment is the first phase of communication between two DICOM Application Entities. The AEs use the Association Establishment to negotiate how data will be encoded and the type of data to be exchanged.
- **Called Application Entity Title** - The Called AE Title defines the intended receiver of an Association.
- **Calling Application Entity Title** - The Calling AE Title defines the requestor of an Association.
- **DICOM Message Service Element (DIMSE)** - A DIMSE defines the services and protocols utilized by an Application Entity to exchange messages.
- **Information Object Definition (IOD)** - An IOD is a data model which is an abstraction of real-world information. This data model defines the nature and attributes relevant to the class of real-world objects represented.
- **Service Class Provider (SCP)** - A Service Class Provider plays the "server" role to perform operations and invoke notifications during an Association. An example of a Storage Service Class Provider would be an image storage device. In this case, the image storage device is storing the image that was sent by a Service Class User.
- **Service Class User (SCU)** - A Service Class User plays the "client" role to invoke operations and perform notifications during an Association. An example of a Storage Service Class User would be an image acquisition device. In this case, the image acquisition device will create and send a DICOM image by requesting that a Service Class Provider store that image.
- **Service/Object Pair (SOP) Class** - The union of an Information Object Definition and a set of DIMSE Services defines a SOP Class. A DICOM Application Entity may support one or more SOP Classes. A SOP Class UID uniquely identifies each SOP Class.
- **SOP Instance** – A SOP Instance is a specific occurrence of an Information Object.

- **Transfer Syntax** - The Transfer Syntax is a set of encoding rules that allow DICOM Application Entities to negotiate the encoding techniques (e.g., data element structure, byte ordering, compression) they are able to support. The Transfer Syntax is negotiated during Association Negotiation.
- **Unique Identifier (UID)** - A Unique Identifier is a globally unique, ISO compliant, ASCII-numeric string. It guarantees uniqueness across multiple countries, sites, vendors and equipment.

1.3 Acronyms, Abbreviations and Symbols

- ACC American College of Cardiology
- ACR American College of Radiology
- ASCII American Standard Code for Information Interchange
- AE Application Entity
- ANSI American National Standards Institute
- CEN TC251 Comite Europeen de Normalisation - Technical Committee 251 - Medical Informatics
- DICOM Digital Imaging and Communications in Medicine
- DIMSE DICOM Message Service Element
- DIMSE-C DICOM Message Service Element - Composite
- DIMSE-N DICOM Message Service Element - Normalized
- HIS Hospital Information System
- HL7 Health Level 7
- IE Information Entity
- IOD Information Object Definition
- ISO International Standards Organization
- JIRA Japan Industries Association of Radiological Systems
- NEMA National Electrical Manufacturers Association
- OSI Open Systems Interconnection
- PDU Protocol Data Unit
- RIS Radiology Information System
- SCP Service Class Provider
- SCU Service Class User
- SOP Service-Object Pair
- TCP/IP Transmission Control Protocol/Internet Protocol
- UID Unique Identifier

1.4 Important Note to the Reader

Where the NM System is linked to a remote DICOM device, the first step is to compare the relevant Conformance Statements. If the Conformance Statements indicate that successful information exchange should be possible, additional validation tests will be necessary to ensure the functionality.

2. Implementation Model

2.1 Application Data Flow Diagram

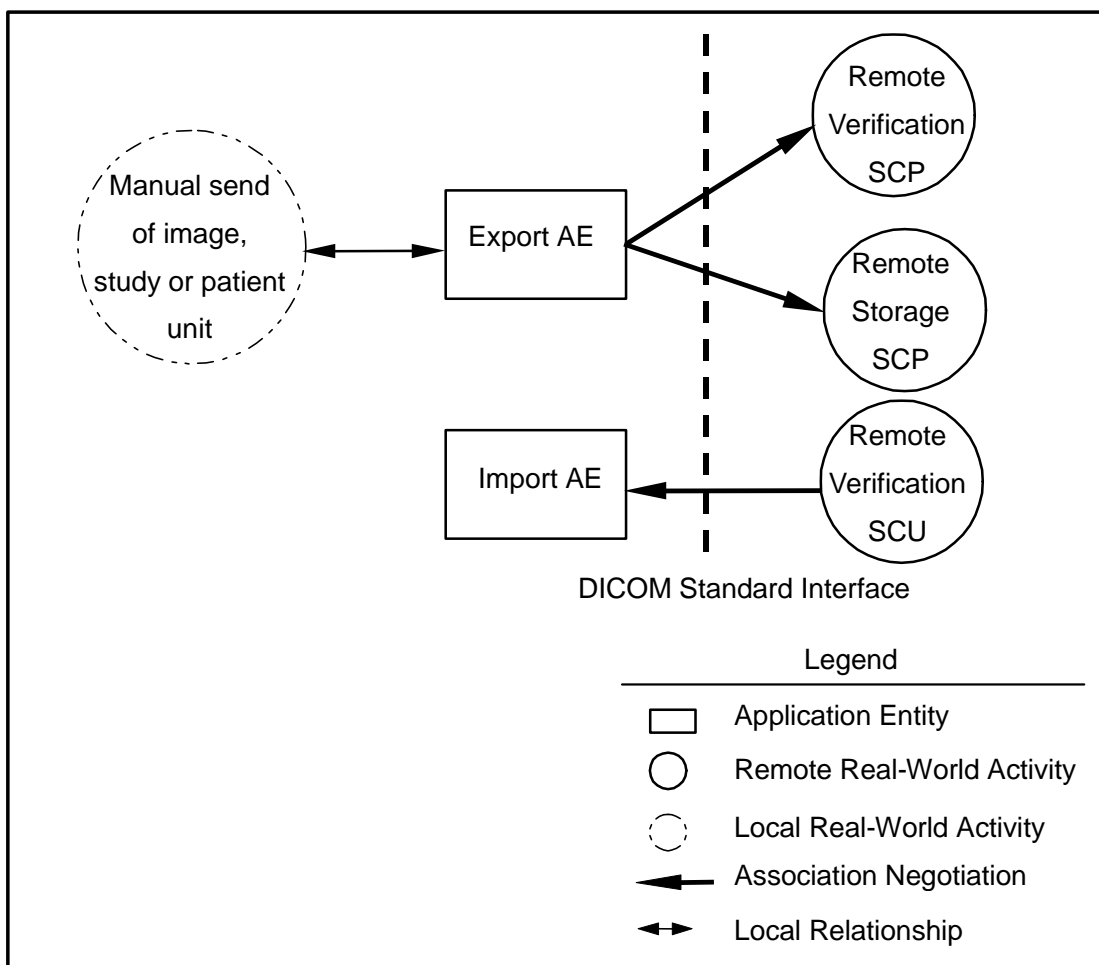


Figure 1

2.2 Functional Definitions of AE's

2.2.1 Export AE

Export AE is used to verify that a remote DICOM device is active on the network, and to transmit images to a remote DICOM device. It therefore performs the following tasks:

- Builds DICOM NM or SC Information Objects
- Establishes DICOM Association with remote DICOM device
- Performs storage of DICOM NM or SC Information Objects to remote DICOM device
- Performs verification of remote DICOM device's presence on network

2.2.2 Import AE

Import AE is used to respond to requests to verify that the NM System is present and active on the network.

2.3 Sequencing of Real World Activities

2.3.1 Features

2.3.1.1 Manual Send of Image, Study or Patient Unit

- Operator requests to send images after selecting the images to be transferred from the Image, Study or Patient List or from the Image Window.
- When the transfer fails, the NM System notifies the operator.

2.3.2 Operation

2.3.2.1 Manual Send of Image, Study or Patient Unit

The operation for sending data is described below:

Step-1 : Select the image, study or patient unit to be sent.

Step-2 : Select the destination of image sending.

Step-3 : Request sending.

3. AE Specifications

3.1 Export Specification

Export AE provides Standard Conformance to the following DICOM SOP Classes as an SCU:

Table 1

SOP Class Name	SOP Class UID
Verification	1.2.840.10008.1.1
NM Image Storage	1.2.840.10008.5.1.4.1.1.20
SC Image Storage	1.2.840.10008.5.1.4.1.1.7

3.1.1 Export Association Establishment Policies

3.1.1.1 Export General

Export AE will utilize and understand the following Application Context Name:

Table 2

DICOM V3.0 Application Context	1.2.840.10008.3.1.1.1
--------------------------------	-----------------------

Export AE supports a minimum PDU size of 16 Kbytes and a maximum PDU size of 16 Kbytes. The default value is set to 16 Kbytes.

3.1.1.2 Export Number of Associations

Export AE can only establish one association at a time, independent of the number of destinations chosen.

3.1.1.3 Export Asynchronous Nature

Export AE allows a single outstanding operation on any association. Therefore, Export AE does not support asynchronous operations window negotiation, other than the default as specified by the DICOM specification.

3.1.1.4 Export Implementation Identifying Information

Export AE will specify the following Implementation Identifying Information:

Table 3

Applicable Models	Implementation Class UID	Implementation Version Name
GMS-5500A/UI, GCA-7100A/UI, GCA-7200A/UI, GMS-5500A/PI, GCA-7100A/PI, GCA-7200A/PI	1.2.392.200036.9116.5.3.10	"TM_NM_DCM_V1.0" (indicates software version)
GMS-5500A/DI, GCA-7100A/DI, GCA-7200A/DI	1.2.392.200036.9116.5.1.10	"TM_NM_DCM_V1.0" (indicates software version)

3.1.2 Export Association Initiation by Real-World Activity

Export AE initiates an association when the operator chooses the following activity:

- "Manual send of image, study or patient unit"
 - Verification: Verify that a remote DICOM device is present on the network
 - Storage: Create and store a NM or SC image to a remote DICOM device

Verification is initiated automatically at the "Manual send of image, study or patient unit"

3.1.2.1 Export Real-World Activity - Verification

3.1.2.1.1 Export Associated Real-World Activity - Verification

Export AE performs Verification automatically before performing an image transfer request. This feature can be turned off in the configuration, should the destination device not support the Verification Service.

3.1.2.1.2 Export Proposed Presentation Contexts - Verification

Export AE proposes the following Presentation Contexts shown below:

Table 4

Presentation Context Table					
Abstract Syntax		Transfer Syntax		Role	Extended Negotiation
Name	UID	Name List	UID List		
Verification	1.2.840.10008.1.1	Implicit VR Little Endian	1.2.840.10008.1.2	SCU	None

3.1.2.2 Export Real-World Activity - Storage

3.1.2.2.1 Export Associated Real-World Activity - Storage

Storage is executed by the NM System after the operator's image transfer requests are queued.

3.1.2.2.2 Export Proposed Presentation Contexts - Storage

Export AE proposes the following Presentation Contexts shown below:

Table 5

Presentation Context Table					
Abstract Syntax		Transfer Syntax		Role	Extended Negotiation
Name	UID	Name List	UID List		
NM Image Storage	1.2.840.10008.5.1.4.1.1.20	Implicit VR Little Endian	1.2.840.10008.1.2	SCU	None
SC Image Storage	1.2.840.10008.5.1.4.1.1.7	Implicit VR Little Endian	1.2.840.10008.1.2	SCU	None

3.1.2.2.2.1 Export SOP Specific Conformance – NM and SC Image Storage

Export AE operation involves the following sequence of steps for each image transfer.

- (1) Association establishment (requestor only)
- (2) Data transfer (SCU only)
- (3) Association release (requestor only)

Export AE judges that the transfer of one image succeeded when the result of (2) "Data transfer" is "Success" even if the result of (3) "Association release" is "Failure".

NM and SC Information Object Definitions are described in Section 8.

3.1.3 Export Association Acceptance Policy

Export AE does not accept any associations generated by remote applications.

3.2 Import Specification

Import AE provides Standard Conformance to the following DICOM SOP Classes as an SCP:

Table 6

SOP Class Name	SOP Class UID
Verification	1.2.840.10008.1.1

3.2.1 Import Association Establishment Policies

3.2.1.1 Import General

Import AE will utilize and understand the following Application Context Name:

Table 7

DICOM V3.0 Application Context	1.2.840.10008.3.1.1.1
--------------------------------	-----------------------

Import AE supports a minimum PDU size of 16Kbytes and a maximum PDU size of 16Kbytes. The default value is set to 16Kbytes.

3.2.1.2 Import Number of Associations

Import AE supports up to three associations at a time.

3.2.1.3 Import Asynchronous Nature

Import AE allows a single outstanding operation on any association. Therefore, Import AE does not support asynchronous operations window negotiation, other than the default as specified by the DICOM specification.

3.2.1.4 Import Implementation Identifying Information

Import AE will specify the following Implementation Identifying Information:

Table 8

Applicable Models	Implementation Class UID	Implementation Version Name
GMS-5500A/UI, GCA-7100A/UI, GCA-7200A/UI, GMS-5500A/PI, GCA-7100A/PI, GCA-7200A/PI	1.2.392.200036.9116.5.3.10	"TM_NM_DCM_V1.0" (indicates software version)
GMS-5500A/DI, GCA-7100A/DI, GCA-7200A/DI	1.2.392.200036.9116.5.1.10	"TM_NM_DCM_V1.0" (indicates software version)

3.2.2 Import Association Initiation by Real-World Activity

Import AE never initiates an association.

3.2.3 Import Association Acceptance Policy

When Import AE receives an association request, it will allow the following activities to be performed during that association:

- Verification : Allow a remote DICOM device to verify that the NM System is active on the DICOM network

3.2.3.1 Import Real-World Activity - Verification

3.2.3.1.1 Import Associated Real-World Activity - Verification

The NM System responds to Verification made by a remote Verification SCU.

3.2.3.1.2 Import Presentation Context Table - Verification

Import AE accepts all of the Presentation Contexts shown below:

Table 9

Presentation Context Table					
Abstract Syntax		Transfer Syntax		Role	Extended Negotiation
Name	UID	Name List	UID List		
Verification	1.2.840.10008.1.1	Implicit VR Little Endian	1.2.840.10008.1.2	SCP	None

3.2.3.1.2.1 Import SOP Specific Conformance - Verification

Import AE responds with the following status codes in response to a C-ECHO request.

Table 10

Service Status	Further Meaning	Protocol Codes	Description
Success	Success	0x0000	Operation performed properly

3.2.3.1.3 Import Presentation Context Acceptance Criterion - Verification

Import AE accepts the Presentation Contexts listed in the Presentation Context Table (Table 9).

3.2.3.1.4 Import Transfer Syntax Selection Policies - Verification

Import AE supports only the Implicit VR Little Endian transfer syntax. It rejects any proposed Presentation Context that does not specify the default Implicit VR Little Endian transfer syntax.

4. Communication Profiles

4.1 Supported Communication Stacks

This product provides DICOM TCP/IP Network Communication Support as defined in Part 8 of the DICOM Standard.

4.2 OSI Stack

Not applicable to this product.

4.3 TCP/IP Stack

This product inherits its TCP/IP stack from the computer system upon which it executes.

4.3.1 API

Not applicable to this product.

4.3.2 Physical media support

This product is indifferent to the physical medium over which TCP/IP executes; it inherits the medium from the computer system upon which it executes.

4.4 Point-to-Point Stack

Not applicable to this product.

5. Extensions/Specializations/Privatizations

5.1 Standard/Specializations/Private SOPs

The supported NM and SC Image Storage may be extended. The following sections describe the details for the SOP Class.

5.1.1 Standard Extended/Specialized/Private SOP – NM and SC Image Storage

Private data elements used in this product are listed in section 8.3.

6. Configuration

For the NM System, the configuration procedure is described in the installation manual.

Note: Settings and changes are to be performed by Toshiba Service Personnel at the time of installation of the system and at anytime thereafter.

6.1 AE Title/Presentation Address Mapping

Mapping from the AE titles to the presentation addresses are as follows:

- One port number and one AE title can be described for one host name.
- Each AE title is mapped to one port number.
- Up to fifteen remote hosts can be described.
- The NM System has following default values:

Local Port No.	104
Local AE Title	"TM_NM_DCM_V1.0" (software version)

6.2 Configurable Parameters

6.2.1 Time-out value, retry count, retry interval

The time-out value, retry count, and retry interval in each status are shown below.

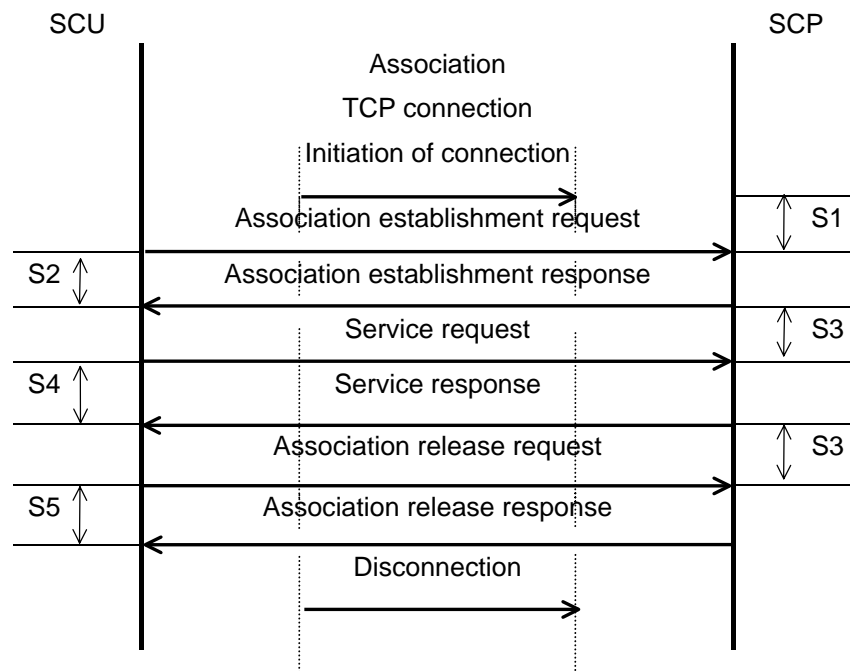


Figure 2

Table 11

Status	Item	Time-out value	Retry count	Retry interval	Remarks
S1	Association establishment request waiting time	Default: 60 seconds Range: 1 to 999999	Not set	Not set	Only one parameter can be set in the NM System.
S2	Association establishment response waiting time	Default: 60 seconds Range: 1 to 999999	Default: Once Range: 0 to 999999	Default: 60 seconds Range: 0 to 999999	Only one parameter can be set in the NM System.
S3	Service request waiting time	Default: 60 seconds Range: 1 to 999999	Not set	Not set	Only one parameter can be set in the NM System.
S4	Service response waiting time	Default: 180 seconds Range: 1 to 999999	Not set	Not set	Can be set for each provided service.
S5	Association release waiting time	Default: 60 seconds Range: 1 to 999999	Not set	Not set	Only one parameter can be set in the NM System.

6.2.2 Warning status criteria

The warning status criteria can be set for each station and each service, for Export AE.

6.2.2.1 NM Image Storage Response

If SUCCESS is set, the NM System judges that the image transfer succeeded.

If FAIL is set, the NM System judges that the image transfer failed.

Table 12

Warning response	Default	Parameter setting range
Coercion of Data Elements	FAIL	SUCCESS or FAIL
Data Set does not match SOP Class	FAIL	SUCCESS or FAIL
Elements discarded	FAIL	SUCCESS or FAIL

6.3 Implementation Information and Maximum Reception PDU Size

The default values for the NM System are used for the Implementation Class UID, the Implementation Version name, and the Maximum length received. They cannot be changed.

Table 13

Applicable Models	Implementation Class UID	Implementation Version Name	Maximum length received (unit: byte)
GMS-5500A/UI, GCA-7100A/UI, GCA-7200A/UI, GMS-5500A/PI, GCA-7100A/PI, GCA-7200A/PI	1.2.392.200036.9116.5.3.10	"TM_NM_DCM_V1.0" (indicates software version)	0x4000
GMS-5500A/DI, GCA-7100A/DI, GCA-7200A/DI	1.2.392.200036.9116.5.1.10	"TM_NM_DCM_V1.0" (indicates software version)	0x4000

6.4 Default Transfer Syntax

6.4.1 Export AE

In NM and SC Image Storage, the NM System can accept only the following Transfer Syntax:

Default = " Implicit VR Little Endian "

7. Support of Extended Character Sets

This product supports the following character sets:

- ISO-IR 6 (default) ISO 646
- ISO-IR 87 (Japanese) JIS X 0208 (Kanji)

8. Information Object Definition-Storage SCU

8.1 Entity Module Definitions

The information modules for the NM System are defined below.

8.1.1 NM IOD Modules

Table 14

Information Entity	Module	Reference	Usage ¹
Patient	Patient Module	8.2.1	M
Study	General Study Module	8.2.2	M
	Patient Study Module	8.2.3	U
Series	General Series Module	8.2.4	M
	NM Series Module	8.2.5	M
Frame of Reference	Frame of Reference Module	Not used	U
Equipment	General Equipment Module	8.2.6	M
Image	General Image Module	8.2.7	M
	Image Pixel Module	8.2.8	M
	NM Image Pixel Module	8.2.9	M
	Multi-frame Module	8.2.10	M
	NM Multi-frame Module	8.2.11	M
	NM Image Module	8.2.12	M
	NM Isotope Module	8.2.13	M
	NM Detector Module	8.2.14	M
	NM TOMO Acquisition Module	8.2.15	C
	NM Multi-gated Acquisition Module	8.2.16	C
	NM Phase Module	8.2.17	C
	NM Reconstruction Module	8.2.18	C
	Overlay Plane Module	Not used	U
	Multi-frame Overlay Module	Not used	U
	Curve Module	Not used	U
VOI LUT Module	Not used	U	
SOP Common Module	8.2.19	M	

¹ M = Mandatory, C = Conditional, U = User option

8.1.2 SC IOD Modules

Table 15

Information Entity	Module	Reference	Usage ¹
Patient	Patient Module	8.2.1	M
Study	General Study Module	8.2.2	M
	Patient Study Module	8.2.3	U
Series	General Series Module	8.2.4	M
Equipment	General Equipment Module	8.2.6	M
	SC Equipment Module	8.2.20	M
Image	General Image Module	8.2.7	M
	Image Pixel Module	8.2.8	M
	SC Image Module	8.2.21	M
	Overlay Plane Module	8.2.22	U
	Multi-LUT Module	Not used	U
	VOI LUT Module	Not used	U
	SOP Common Module	8.2.19	M

¹ M = Mandatory, C = Conditional, U = User option

8.2 Information Object Definitions

8.2.1 Patient Module

Table 16

Attribute Name	Tag	Type	Attribute Description
Patient's Name	(0010,0010)	2	Always set.
Patient ID	(0010,0020)	2	Always set.
Patient's Birth Date	(0010,0030)	2	Length=0 when no entry is made.
Patient's Sex	(0010,0040)	2	Length=0 when no entry is made. ("M", "F", "O")
Patient Comments	(0010,4000)	3	Not set when no entry is made.

8.2.2 General Study Module

Table 17

Attribute Name	Tag	Type	Attribute Description
Study Instance UID	(0020,000D)	1	Always set.
Study Date	(0008,0020)	2	Always set.
Study Time	(0008,0030)	2	Always set.
Referring Physician's Name	(0008,0090)	2	Length=0 when no entry is made.
Study Description	(0008,1030)	3	Not set when no entry is made.
Study ID	(0020,0010)	2	Length=0 when no entry is made.
Accession Number	(0008,0050)	2	NM Image Storage: Length=0 when no entry is made. SC Image Storage: Length=0.

8.2.3 Patient Study Module

Table 18

Attribute Name	Tag	Type	Attribute Description
Admitting Diagnoses Description	(0008,1080)	3	Not set when no entry is made.
Patient's Age	(0010,1010)	3	Not set when no entry is made.

8.2.4 General Series Module

Table 19

Attribute Name	Tag	Type	Attribute Description
Modality	(0008,0060)	1	NM Image Storage: Always set. ("NM") SC Image Storage: See 8.2.20.
Series Instance UID	(0020,000E)	1	Always set.
Series Number	(0020,0011)	2	NM Image Storage: Length=0 when no entry is made. SC Image Storage: Length=0.
Series Date	(0008,0021)	3	NM Image Storage: Always set. SC Image Storage: Not set.
Series Time	(0008,0031)	3	NM Image Storage: Always set. SC Image Storage: Not set.
Series Description	(0008,103E)	3	Always set.

8.2.5 NM Series Module

Table 20

Attribute Name	Tag	Type	Attribute Description
Patient Orientation Code Sequence	(0054,0410)	2	Length=0 when the setting conditions are not met, or when no entry is made.
>Code Value	(0008,0100)	1C	Always set when the sequence is set.
>Coding Scheme Designator	(0008,0102)	1C	Always set when the sequence is set. ("99SDM")
>Code Meaning	(0008,0104)	3	Not set when the sequence is not set, or when no entry is made.
Patient Orientation Modifier Code Sequence	(0054,0412)	2	Length=0 when the setting conditions are not met, or when no entry is made.
>Code Value	(0008,0100)	1C	Always set when the sequence is set.
>Coding Scheme Designator	(0008,0102)	1C	Always set when the sequence is set. ("99SDM")
>Code Meaning	(0008,0104)	3	Not set when the sequence is not set, or when no entry is made.
Patient Gantry Relationship Code Sequence	(0054,0414)	2	Length=0 when the setting conditions are not met, or when no entry is made.
>Code Value	(0008,0100)	1C	Always set when the sequence is set.
>Coding Scheme Designator	(0008,0102)	1C	Always set when the sequence is set. ("99SDM")
>Code Meaning	(0008,0104)	3	Not set when the sequence is not set, or when no entry is made.

8.2.6 General Equipment Module

Table 21

Attribute Name	Tag	Type	Attribute Description
Manufacturer	(0008,0070)	2	Always set. ("TOSHIBA_MEC")
Institution Name	(0008,0080)	3	Not set when no entry is made.
Manufacturer's Model Name	(0008,1090)	3	NM Image Storage: Always set. SC Image Storage: Not set.
Device Serial Number	(0018,1000)	3	NM Image Storage: Always set. SC Image Storage: Not set.

8.2.7 General Image Module

Table 22

Attribute Name	Tag	Type	Attribute Description
Instance Number	(0020,0013)	2	NM Image Storage: Length=0 when no entry is made. SC Image Storage: Length=0.
Patient Orientation	(0020,0020)	2C	NM Image Storage: Length=0 when no entry is made. ("R\P", "L\P") SC Image Storage: Length=0.
Image Date	(0008,0023)	2C	Length=0.
Image Time	(0008,0033)	2C	Length=0.
Image Type	(0008,0008)	3	Always set. NM Image Storage: ("ORIGINAL\PRIMARY[VALUE 3]\EMISSION", where VALUE 3 is one of STATIC, DYNAMIC, GATED, WHOLEBODY, TOMO, GATED TOMO, RECON TOMO, RECON GATED TOMO) SC Image Storage: ("DERIVED\SECONDARY")
Acquisition Date	(0008,0022)	2	NM Image Storage: Always set. SC Image Storage: Length=0.
Acquisition Time	(0008,0032)	2	NM Image Storage: Always set. SC Image Storage: Length=0.
Images in Acquisition	(0020,1002)	3	NM Image Storage: Not set when no entry is made. SC Image Storage: Not set.

8.2.8 Image Pixel Module

Table 23

Attribute Name	Tag	Type	Attribute Description
Samples per Pixel	(0028,0002)	1	Always set. NM Image Storage: (0x01) SC Image Storage: (0x03)
Photometric Interpretation	(0028,0004)	1	Always set. NM Image Storage: ("MONOCHROME2") SC Image Storage: ("RGB")
Rows	(0028,0010)	1	Always set.
Columns	(0028,0011)	1	Always set.
Bits Allocated	(0028,0100)	1	Always set. NM Image Storage: (0x10) SC Image Storage: (0x08)
Bits Stored	(0028,0101)	1	Always set. NM Image Storage: (0x10) SC Image Storage: (0x08)
High Bit	(0028,0102)	1	Always set. NM Image Storage: (0x0F) SC Image Storage: (0x07)
Pixel Representation	(0028,0103)	1	Always set. NM Image Storage: (0x0000, 0x0001) SC Image Storage: (0x0)
Smallest Image Pixel Value	(0028,0106)	3	Not set when no entry is made.
Largest Image Pixel Value	(0028,0107)	3	Not set when no entry is made.
Window Center	(0028,1050)	3	Not set when no entry is made.
Window Width	(0028,1051)	1C	Always set when the Window Center is set.
Pixel Data	(7FE0,0010)	1	Always set.
Planar Configuration	(0028,0006)	1C	SC Image Storage: Always set. (0x0) NM Image Storage: Not set.

8.2.9 NM Image Pixel Module

Table 24

Attribute Name	Tag	Type	Attribute Description
Samples per Pixel	(0028,0002)	1	Always set. (0x01)
Photometric Interpretation	(0028,0004)	1	Always set. ("MONOCHROME2")
Bits Allocated	(0028,0100)	1	Always set. (0x10)
Bits Stored	(0028,0101)	1	Always set. (0x10)
High Bit	(0028,0102)	1	Always set. (0x0F)
Pixel Spacing	(0028,0030)	2	Always set.

8.2.10 Multi-frame Module

Table 25

Attribute Name	Tag	Type	Attribute Description
Number of Frames	(0028,0008)	1	Always set.
Frame Increment Pointer	(0028,0009)	1	Always set.

8.2.11 NM Multi-frame Module

Table 26

Attribute Name	Tag	Type	Attribute Description
Frame Increment Pointer	(0028,0009)	1	Always set.
Energy Window Vector	(0054,0010)	1C	Always set when the setting conditions are met. (0x01)
Number of Energy Windows	(0054,0011)	1	Always set.
Detector Vector	(0054,0020)	1C	Always set then the setting conditions are met.
Number of Detectors	(0054,0021)	1	Always set.
Phase Vector	(0054,0030)	1C	Always set when the setting conditions are met.
Number of Phases	(0054,0031)	1C	Always set when the setting conditions are met.
Rotation Vector	(0054,0050)	1C	Always set when the setting conditions are met.
Number of Rotations	(0054,0051)	1C	Always set when the setting conditions are met.
R-R Interval Vector	(0054,0060)	1C	Always set when the setting conditions are met.
Number of R-R Intervals	(0054,0061)	1C	Always set when the setting conditions are met.
Time Slot Vector	(0054,0070)	1C	Always set when the setting conditions are met.
Number of Time Slots	(0054,0071)	1C	Always set when the setting conditions are met.
Slice Vector	(0054,0080)	1C	Always set when the setting conditions are met.
Number of Slices	(0054,0081)	1C	Always set when the setting conditions are met.
Angular View Vector	(0054,0090)	1C	Always set when the setting conditions are met.
Time Slice Vector	(0054,0100)	1C	Always set when the setting conditions are met.

8.2.12 NM Image Module

Table 27

Attribute Name	Tag	Type	Attribute Description
Image Type	(0008,0008)	1	Always set. ("ORIGINAL\PRIMARY[VALUE 3]", where VALUE 3 is one of STATIC, DYNAMIC, GATED, WHOLEBODY, TOMO, GATED TOMO, RECON TOMO, RECON GATED TOMO)
Counts Accumulated	(0018,0070)	2	Always set.
Acquisition Termination Condition	(0018,0071)	3	Not set when no entry is made. ("CNTS", "MANU", "TIME", "TRIG")
Actual Frame Duration	(0018,1242)	1C	Always set when the setting conditions are met.
Corrected Image	(0028,0051)	3	Not set when no entry is made. ("ATTN", "SCAT", "UNIF")
Whole Body Technique	(0018,1301)	3	Always set when the setting conditions are met. ("1PS", "2PS")
Scan Velocity	(0018,1300)	2C	Always set when the setting conditions are met.
Scan Length	(0054,1302)	2C	Always set when the setting conditions are met.
Trigger Source or Type	(0018,1061)	3	Always set when the setting conditions are met. ("EKG")
Anatomic region Sequence	(0008,2218)	3	Not set when no entry is made.
>Code Value	(0008,0100)	1C	Always set when the sequence is set.
>Coding Scheme Designator	(0008,0102)	1C	Always set when the sequence is set. ("99SDM")
>Code Meaning	(0008,0104)	3	Always set when the sequence is set.

8.2.13 NM Isotope Module

Table 28

Attribute Name	Tag	Type	Attribute Description
Energy Window Information Sequence	(0054,0012)	2	Not set when no entry is made.
>Energy Window Name	(0054,0018)	3	Not set when no entry is made.
>Energy Window Range Sequence	(0054,0013)	3	Not set when no entry is made.
>>Energy Window Lower Limit	(0054,0014)	3	Not set when no entry is made.
>>Energy Window Upper Limit	(0054,0015)	3	Not set when no entry is made.
Radiopharmaceutical Information Sequence	(0054,0016)	2	Length=0 when no entry is made
>Radionuclide Code Sequence	(0054,0300)	2C	Always set if the sequence is set.
>>Code Value	(0008,0100)	1C	Always set if the sequence is set.
>>Coding Scheme Designator	(0008,0102)	1C	Always set if the sequence is set.
>>Code Meaning	(0008,0104)	3	Always set when the sequence is set. ("99SDM")
>Radionuclide Total Dose	(0018,1074)	3	Not set when no entry is made.

8.2.14 NM Detector Module

Table 29

Attribute Name	Tag	Type	Attribute Description
Detector Information Sequence	(0054,0022)	2	Always set.
>Collimator/grid Name	(0018,1180)	3	Always set.
>Collimator Type	(0018,1181)	2C	Always set. ("FANB", "PARA", "UNKNOWN")
>Field of View Shape	(0018,1147)	3	Not set when no entry is made. ("RECTANGLE", "ROUND")
>Image Orientation (Patient)	(0020,0037)	2C	Always set when the setting conditions are met.
>Image Position (Patient)	(0020,0032)	2C	Length=0 when no entry is made.

8.2.15 NM TOMO Acquisition Module

This module is set only when Image Type (0008,0008), Value 3, is TOMO, GATED TOMO, RECON TOMO, or RECON GATED TOMO.

Table 30

Attribute Name	Tag	Type	Attribute Description
Rotation Information Sequence	(0054,0052)	2	Always set.
>Start Angle	(0054,0200)	1C	Always set if the sequence is set.
>Angular Step	(0018,1144)	1C	Always set if the sequence is set.
>Rotation Direction	(0018,1140)	1C	Always set if the sequence is set.
>Scan Arc	(0018,1143)	1C	Always set if the sequence is set. ("120", "180", "360")
>Actual Frame Duration	(0018,1242)	1C	Always set if the sequence is set.
>Number of Frames in Rotation	(0054,0053)	1C	Always set if the sequence is set.
>Table Traverse	(0018,1131)	3	Not set when no entry is made.
Type of Detector Motion	(0054,0202)	3	Always set. ("CONTINUOUS", "STEP AND SHOOT")

8.2.16 NM Multi-gated Acquisition Module

This module is set when Image Type (0008,0008), Value 3, is GATED, GATED TOMO, or RECON GATED TOMO.

Table 31

Attribute Name	Tag	Type	Attribute Description
Beat Rejection Flag	(0018,1080)	3	Always set.
Skip Beat	(0018,1086)	3	Not set when no entry is made.
Gated Information Sequence	(0054,0062)	2C	Length=0 when there is no description of the Data Information Sequence.
>Data Information Sequence	(0054,0063)	2C	Length=0 when there is no description of the Frame Time.
>>Frame Time	(0018,1063)	1C	Always set when the sequence is set.
>>Nominal Interval	(0018,1062)	3	Always set when the sequence is set.
>>Time Slot Information Sequence	(0054,0072)	2C	Length=0 when no entry is made.
>>>Time Slot Time	(0054,0073)	3	Not set when no entry is made.

8.2.17 NM Phase Module

This module is set when Image Type (0008,0008), Value 3, is DYNAMIC.

Table 32

Attribute Name	Tag	Type	Attribute Description
Phase Information Sequence	(0054,0032)	2C	Always set.
>Phase Delay	(0054,0036)	1C	Always set if the sequence is set.
>Actual Frame Duration	(0018,1242)	1C	Always set if the sequence is set.
>Pause Between Frames	(0054,0038)	1C	Always set if the sequence is set.
>Number of Frames in Phase	(0054,0033)	1C	Always set if the sequence is set.

8.2.18 NM Reconstruction Module

This module is set when Image Type (0008,0008), Value 3, is RECON TOMO or RECON GATED TOMO.

Table 33

Attribute Name	Tag	Type	Attribute Description
Spacing Between Slices	(0018,0088)	2	Always set.
Convolution Kernel	(0018,1210)	3	Always set.
Slice Thickness	(0018,0050)	2	Always set.

8.2.19 SOP Common Module

Table 34

Attribute Name	Tag	Type	Attribute Description
SOP Class UID	(0008,0016)	1	Always set.
SOP Instance UID	(0008,0018)	1	Always set.
Instance Creation Date	(0008,0012)	3	Always set.
Instance Creation Time	(0008,0013)	3	Always set.
Instance Creator UID	(0008,0014)	3	Always set.
Specific Character Set	(0008,0005)	1C	Always set when the setting conditions are met.

8.2.20 SC Equipment Module

Table 35

Attribute Name	Tag	Type	Attribute Description
Conversion Type	(0008,0064)	1	Always set. ("WSD")
Modality	(0008,0060)	3	Always set. ("NM")
Secondary Capture Device Manufacturer	(0018,1016)	3	Not set when no entry is made.
Secondary Capture Device Software Version	(0018,1019)	3	Not set when no entry is made.

8.2.21 SC Image Module

Elements in this module are not set.

8.2.22 Overlay Plane Module

This module is set if "Overlay switch" is ON. If the switch is OFF, the overlay is embedded in the image itself.

Note: "Overlay switch" is set by Toshiba Service Personnel at the time of installation of the system and at anytime thereafter.

Table 36

Attribute Name	Tag	Type	Attribute Description
Overlay Rows	(60xx,0010)	1	Always set.
Overlay Columns	(60xx,0011)	1	Always set.
Overlay Type	(60xx,0040)	1	Always set. ("G")
Origin	(60xx,0050)	1	Always set.
Overlay Bits Allocated	(60xx,0100)	1	Always set. (0x01)
Bit Position	(60xx,0102)	1	Always set. (0x00)
Overlay Data	(60xx,3000)	1C	Always set.
Overlay Descriptor – Red	(60xx,1101)	3	Always set. (0x08)
Overlay Descriptor – Green	(60xx,1102)	3	Always set. (0x08)
Overlay Descriptor –Blue	(60xx,1103)	3	Always set. (0x08)
Overlays – Red	(60xx,1201)	3	Always set.
Overlays – Green	(60xx,1202)	3	Always set.
Overlays - Blue	(60xx,1203)	3	Always set.

8.3 Private Data Elements

Private data elements for the NM System are defined below.

Table 37

Attribute Name	Tag	Type	VR	VM	Attribute Description
Private Creator	(0009,00XX)	3	LO	1	"TOSHIBA_MEC_OT3"
HIS/RIS Study ID	(0009,XX00)	3	LO	1	Not set when no entry is made.
Private Creator	(7017,00XX)	3	LO	1	"TOSHIBA_MEC_NM3"
Black box Data 1	(7017,XX00)	3	OB	1-n	NM Image Storage: Not set when "Black box switch" is OFF. When "Black box switch" is ON, always set. SC Image Storage: Not set.
Black box Data 2	(7017,XX01)	3	OB	1-n	NM Image Storage: Not set when "Black box switch" is OFF. When "Black box switch" is ON, not set when no entry is made. SC Image Storage: Not set.

Note: "Black box switch" set by Toshiba Service Personnel at the time of installation of the system and at anytime thereafter.